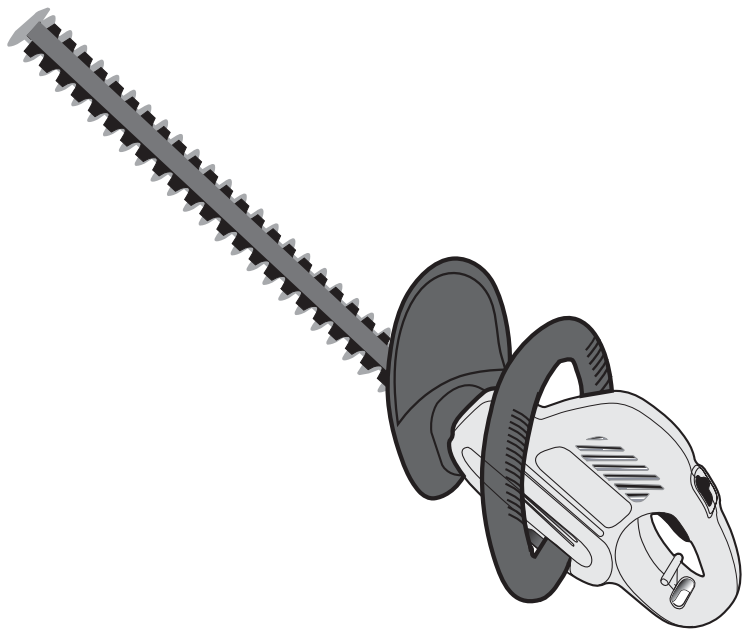


# Instruction Manual



## HEAVY DUTY HEDGE TRIMMER

Models 900.79951, 900.79952, 900.79973,  
900.79974 & 900.79975



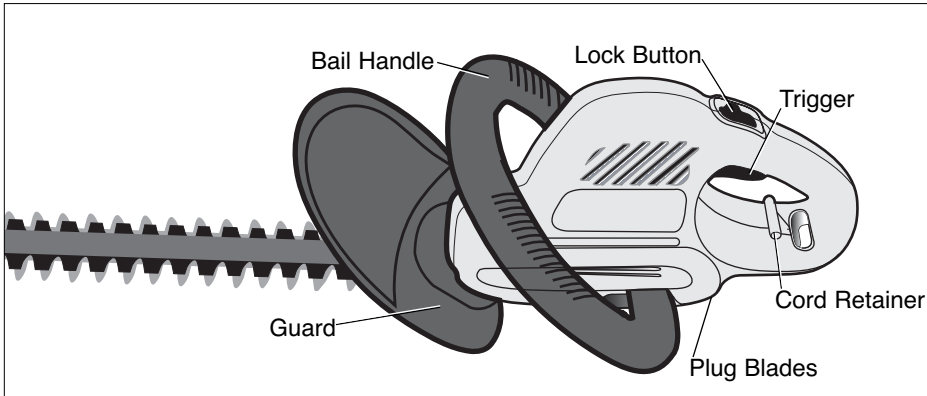
### ▲ CAUTION:

Before using this product,  
read this manual and follow  
all its Safety Rules and  
Operating Instructions.

- Safety
- Operation
- Maintenance
- Español

**Sears, Roebuck and Co., Hoffman Estates, IL 60179 USA**  
[www.sears.com/craftsman](http://www.sears.com/craftsman)

## HEDGE TRIMMER DIAGRAM



## SEARS WARRANTY

### FULL ONE YEAR WARRANTY ON CRAFTSMAN HEAVY DUTY HEDGE TRIMMER

If this Craftsman product fails due to a defect in material or workmanship within one year from the date of purchase, return it to your nearest Sears store or Craftsman outlet to have it replaced free of charge.

### WARRANTY SERVICE

This warranty applies only while this hedge trimmer is used in the United States.

This warranty gives you specific legal rights, and you may also have other rights which vary from state to state.

Sears, Roebuck and Co., Dept. 817WA, Hoffman Estates, IL 60179

## ⚠ WARNING: IMPORTANT SAFETY WARNINGS AND INSTRUCTIONS

### TO REDUCE RISK OF INJURY:

- Before any use, be sure everyone using this tool reads and understands all safety instructions and other information contained in this manual.
- Save these instructions and review frequently prior to use and in instructing others.

**⚠ WARNING:** When using electric gardening appliances, basic safety precautions should always be followed to reduce risk of fire, electric shock, and personal injury, including the following:

**READ ALL INSTRUCTIONS.**

## ⚠ GENERAL SAFETY WARNINGS AND INSTRUCTIONS FOR ALL TOOLS

- **AVOID DANGEROUS ENVIRONMENT** - Don't use hedge trimmers in damp or wet locations.
- **DON'T USE IN RAIN.**
- **KEEP CHILDREN AWAY** - All visitors should be kept at a safe distance from the work area.
- **DRESS PROPERLY** - Don't wear loose clothing or jewelry. They can be caught in moving parts. Use of rubber gloves and substantial footwear is recommended when working outdoors. Wear protective hair covering to contain long hair.

- **USE SAFETY GLASSES** - Also use face or dustmask if operation is dusty.
- **GROUND FAULT CIRCUIT INTERRUPTER (GFCI)** protection should be provided on the circuit(s) or outlet(s) to be used for the hedge trimmer. Receptacles are available having built-in GFCI protection and may be used for this measure of safety.
- **USE RIGHT APPLIANCE** - Do not use appliance for any job except that for which it is intended.

**⚠ WARNING:** To reduce the risk of electric shock use only with an extension cord intended for outdoor use, such as SW-A, SOW-A, STW-A, STOW-A, SJW-A, SJOW-A, SJTW-A or SJTOW-A.

- **EXTENSION CORD.** Make sure your extension cord is in good condition. When using an extension cord be sure it is heavy enough to carry the current your product will draw. An undersized extension cord will cause a drop in line voltage resulting in loss of power and overheating. The following table shows the correct size to use depending on cord length and nameplate ampere rating. If in doubt, use the next heavier gage. The smaller the gage number, the heavier the cord.

Total Cord Length	0-25	26-50	51-100	105-150
Amp Rating	AWG	AWG	AWG	AWG
More than 0 Not More than 6	18	16	16	14
More than 6 Not More than 10	18	16	14	12
More than 10 Not more than 12	16	16	14	12
More than 12 Not more than 16	14	12	Not Recommended	

- **AVOID UNINTENTIONAL STARTING** - Don't carry plugged in hedge trimmer with finger on switch. Be sure switch is off when plugging in.
- **DON'T ABUSE CORD** - Never carry hedge trimmer by cord or yank it to disconnect from receptacle. Keep cord from heat, oil, and sharp edges.

**⚠ DANGER:** Risk of cut. Keep hands away from blades. Keep both hands on handles when power is on.

- **DO NOT ATTEMPT** to remove cut material or hold material to be cut when blades are moving. Make sure trimmer switch is off when clearing jammed material from blades. Do not grasp the exposed cutting blades or cutting edges when picking up or holding the hedge trimmer.

**⚠ CAUTION:** Blades coast after turn off.

- **DON'T FORCE HEDGE TRIMMER** - It will do the job better and with less likelihood of a risk of injury at the rate for which it was designed.
- **DON'T OVERREACH** - Keep proper footing and balance at all times.
- **STAY ALERT** - Watch what you are doing. Use common sense. Do not operate hedge trimmer when you are tired.
- **DISCONNECT HEDGE TRIMMER** from the power supply when not in use or when servicing or cleaning.
- **STORE IDLE HEDGE TRIMMER INDOORS** - When not in use, hedge trimmer should be stored indoors in a dry and high or locked-up place- out of reach of children.
- **MAINTAIN HEDGE TRIMMER WITH CARE** - Keep cutting blades sharp and clean for best performance and to reduce the risk of injury. Inspect extension cord periodically and replace if damaged. Keep handles dry, clean and free from oil and grease.
- **CHECK DAMAGED PARTS** - before further use of the hedge trimmer, a guard or other part that is damaged should be carefully checked to determine that it will operate properly and perform its intended function. Check for alignment of moving parts, binding of moving parts, breakage of parts, mounting and any other condition that may affect its operation. A guard or other part that is damaged should be properly repaired or replaced by an authorized service center unless otherwise indicated elsewhere in this manual.

## **⚠ SAFETY WARNINGS: DOUBLE INSULATION**

Double insulated tools are constructed throughout with two separate layers of electrical insulation or one double thickness of insulation between you and the tool's electrical system. Tools built with this insulation system are not

intended to be grounded. As a result, your tool is equipped with a two prong plug which permits you to use extension cords without concern for maintaining a ground connection.

**NOTE:** Double insulation does not take

the place of normal safety precautions when operating this tool. The insulation system is for added protection against injury resulting from a possible electrical insulation failure within the tool.

Replacement parts: When servicing all tools, USE IDENTICAL REPLACEMENT PARTS. Repair or replace damaged cords.

## ⚠ SAFETY WARNINGS AND INSTRUCTIONS: POLARIZED PLUGS

To reduce the risk of electric shock, this equipment has a polarized plug (one blade is wider than the other). This equipment must be used with a suitable polarized 2 wire or 3 wire extension cord. Polarized connections will fit together only one way. Make sure that the receptacle end of the extension cord has large and small blade slot widths. If the

plug does not fit fully into the extension cord, reverse the plug. If it still does not fit, obtain a suitable extension cord. If the extension cord does not fit fully into the outlet, contact a qualified electrician to install the proper outlet. Do not change the tool plug or extension cord in any way.

## SPECIFIC SAFETY WARNING

**⚠ WARNING:** Some dust created when using lawn and garden power tools contains chemicals known to cause cancer, birth defects and other reproductive harm.

Some examples of these chemicals are:

- crystalline silica from sand, bricks and other masonry dust
- arsenic and chromium from chemically treated lumber (CCA)
- compounds in fertilizers
- compounds in insecticides, herbicides and pesticides

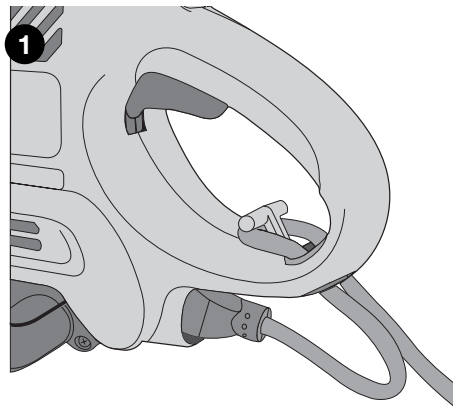
Health risk from these chemical exposures varies, depending on the environment in which you are working and how often you do this type of work. To reduce your exposure to these chemicals, follow product label instructions to apply chemicals such as fertilizers, insecticides, herbicides or pesticides. When using these tools, wear safety equipment such as gloves and dust masks which are especially designed to filter out microscopic particles.

## OPERATING INSTRUCTIONS

### SAVE THESE INSTRUCTIONS FOR FUTURE USE

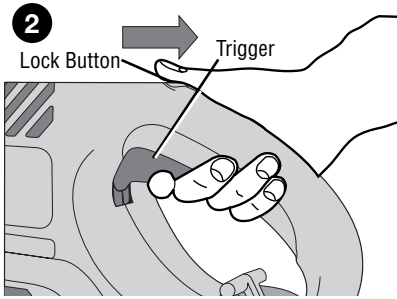
#### ATTACHING EXTENSION CORD TO TRIMMER

An extension cord retainer is built into the switch handle that prevents the tool from coming unplugged. To use this feature, simply double the extension cord about 8 inches from the end, and insert it into the slot in the bottom of the handle area. Hook the loop formed by doubling the cord over the tab, as shown in Figure 1. Gently tug on the cord to insure that it is firmly retained in the trimmer's handle. Plug the receptacle end of the extension cord into the plug blades in the trimmer.



## TO TURN THE TOOL ON

Pull the LOCK BUTTON back with your thumb and then squeeze the TRIGGER with your fingers as shown in Figure 2. (Once the tool is running you can release the LOCK BUTTON.) To turn the tool OFF, release the TRIGGER.



## TO LOCK THE TOOL ON FOR CONTINUOUS RUN

**WITH THE TOOL RUNNING**, pull the LOCK BUTTON **ALL THE WAY** back, release the TRIGGER, then release the LOCK BUTTON. The tool is now locked ON. To turn the tool OFF, squeeze and release the TRIGGER. **NOTE:** In order to lock the tool on, it is important to first release the trigger and then release the lock button.

## TRIMMING INSTRUCTIONS

### 1 EXTENSION CORD - (Figure 1)

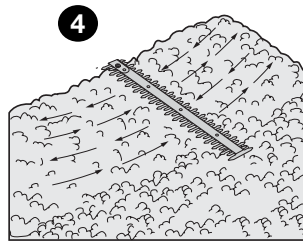
Always keep extension cord behind trimmer and away from the trimming operation. Never drape it over a hedge being trimmed. If you cut or damage the cord, unplug it at the electrical outlet immediately, before inspecting or repairing cord.

2 **WORKING POSITION** - Maintain proper footing and balance and do not overreach. Wear safety goggles, non-skid footwear and rubber gloves when trimming. Hold the tool firmly in both hands and turn the tool ON. Always hold the trimmer, as shown in figure 3, with one hand on the switch handle and one hand on the bail handle. Never hold the tool by the blade guard.

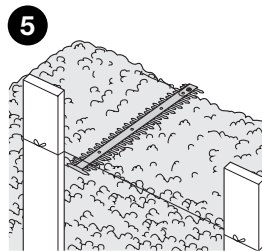


3 **TRIMMING NEW GROWTH** - (Figure 4) - A wide, sweeping motion, feeding the blade teeth through the twigs is most effective. A slight downward tilt of the blade, in the direction of motion gives the best cutting.

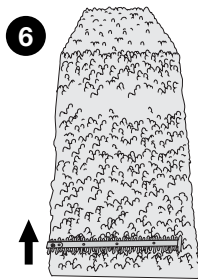
**CAUTION:** Do not use the trimmer for cutting stems greater than 3/4" (10mm). Use the trimmer only for cutting normal shrubbery found around houses and buildings.



4. **LEVEL HEDGES** (Figure 5) - To obtain exceptionally level hedges, a piece of string can be stretched along the length of the hedge as a guide.



5. **SIDE-TRIMMING HEDGES** (Figure 6)  
Begin at the bottom and sweep up.



never immerse any part of the tool into a liquid.

**IMPORTANT:** To assure product SAFETY and RELIABILITY, repairs, maintenance and adjustment should be performed by Sears service centers or other qualified service personnel, always using identical replacement parts.

## ACCESSORIES

**WARNING:** DO NOT use the hedge trimmer with any type of accessory or attachment. Such usage might be hazardous.

**WARNING:** To guard against injury observe the following:

- Read instruction manual before using. Save instruction manual.
- Keep hands away from blades.
- Keep hands on handles. Don't overreach.
- Do not use under wet conditions.
- Do not use with damaged extension cords.
- Do not unplug or store with switch locked on.

**CAUTION:** Blade coasts after turn off.

## MAINTENANCE

The cutting blades are made from high quality, hardened steel and with normal usage, they will not require resharpener. However, if you accidentally hit a wire fence, stones, glass or other hard objects, you may put a nick in the blade. There is no need to remove this nick as long as it does not interfere with the movement of the blade. If it does interfere, unplug unit and use a fine toothed file or sharpening stone to remove the nick.

If you drop the trimmer, carefully inspect it for damage. If the blade is bent, housing cracked, or handles broken or if you see any other condition that may affect the trimmer's operation, contact your local Sears Service Center for repairs before putting it back into use.

Fertilizers and other garden chemicals contain agents which greatly accelerate the corrosion of metals. Do not store the tool on or adjacent to fertilizers or chemicals.

With the unit unplugged, use only mild soap and a damp cloth to clean the tool. Never let any liquid get inside the tool;







# Get it fixed, at your home or ours!

## Your Home

For repair – in your home – of all major brand appliances, lawn and garden equipment, or heating and cooling systems, no matter who made it, no matter who sold it!

For the replacement parts, accessories and owner's manuals that you need to do-it-yourself.

For Sears professional installation of home appliances and items like garage door openers and water heaters.

1-800-4-MY-HOME<sup>®</sup> (1-800-469-4663)

Call anytime, day or night (U.S.A. and Canada)

[www.sears.com](http://www.sears.com)    [www.sears.ca](http://www.sears.ca)

---

## Our Home

For repair of carry-in items like vacuums, lawn equipment, and electronics, call or go on-line for the location of your nearest Sears Parts & Repair Center.

1-800-488-1222

Call anytime, day or night (U.S.A. only)

[www.sears.com](http://www.sears.com)

---

To purchase a protection agreement (U.S.A.) or maintenance agreement (Canada) on a product serviced by Sears:

1-800-827-6655 (U.S.A.)

1-800-361-6665 (Canada)

---

Para pedir servicio de reparación a domicilio, y para ordenar piezas:

1-888-SU-HOGAR<sup>SM</sup>  
(1-888-784-6427)

Au Canada pour service en français:

1-800-LE-FOYER<sup>MC</sup>  
(1-800-533-6937)  
[www.sears.ca](http://www.sears.ca)



© Registered Trademark / <sup>TM</sup> Trademark / <sup>SM</sup> Service Mark of Sears, Roebuck and Co.

© Marca Registrada / <sup>TM</sup> Marca de Fábrica / <sup>SM</sup> Marca de Servicio de Sears, Roebuck and Co.  
<sup>MC</sup> Marque de commerce / <sup>MD</sup> Marque déposée de Sears, Roebuck and Co.

© Sears, Roebuck and Co.

