



Stanley Fastening Systems

Operation and Maintenance Manual
for

F84 SERIES STAPLERS

F84 Wide Crown Foot Operated Box Bottomer

F84E82 Arm Stapler

F84E83 Arm Stapler

F84E87 Arm Stapler

REFERENCE

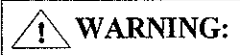


BEFORE OPERATING THIS TOOL, ALL OPERATORS SHOULD STUDY THIS MANUAL, TO UNDERSTAND AND FOLLOW THE SAFETY WARNINGS AND INSTRUCTIONS. KEEP THESE INSTRUCTIONS WITH THE TOOL FOR FUTURE REFERENCE. IF YOU HAVE ANY QUESTIONS, CONTACT YOUR STANLEY-BOSTITCH REPRESENTATIVE OR DISTRIBUTOR.

F84 Wide Crown Box Bottomer

1. SPECIFICATIONS

Stapler Head:	F9400EDHD Standard
Type of Staple:	SW7437 7/16,5/8 or 3/4 SW9040 7/16,5/8,3/4 or 7/8
Sealing Capacity:	Any thickness of corrugated or solid fiber board with range of 7/16" staple (2 thicknesses "B" flute board) to 7/8" staple (2 thicknesses "AB board")
Staple Capacity:	SW7437: 240 Staples (4 Sticks) SW9040: 200 Staples (4 Sticks)
Throat Depth:	16-1/2" (419mm)
Post Depth:	36" (914mm)
Overall Size:	22" Wide x 37" Deep x 50" High (559mm x 940mm x 1270mm)
Weight:	Shipped: 90 lb. (41 kg) Machine Only: 74 lb. (34 kg)
Accessories:	Optional Kits for the Standard F84 F84K1 Clincher Arm Kit (Optional) F84K2 Air Drive Kit (Optional)

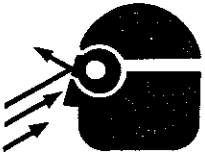


WARNING:

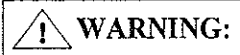
EYE PROTECTION which conforms to ANSI specifications and provides protection against flying particles from both FRONT and SIDE should ALWAYS be worn by the operator and others in the work area when loading, operating or servicing this tool. Eye protection is required to guard against flying fasteners and debris, which could cause severe eye injury.



WARNING:



The employer and/or user must ensure that proper eye protection is worn. Eye protection equipment must conform to the requirements of the American National Standards Institute, ANSI Z87.1-1979 and provide both frontal and side protection. Note: Non-side shielded spectacles and face shields alone do not provide adequate protection.



WARNING:

To prevent Injury, never place hands or any other body part in contact with the mechanism of the tool or in the staple clinching area.

CAUTION Do not operate the machine without work between the Driver and Clincher.

2. LOADING

While holding the curved portion of the Pusher firmly, pull it towards the rear of the machine until it can be rotated down and out of the way. Slide staples into magazine. Replace pusher.

3. ADJUSTMENTS

All adjustments are factory set and **should not** need to be changed. If it becomes necessary, however, follow these directions. (Index Numbers refer to Figures 1 and 2 on subsequent pages)

Clincher - If the legs of the staple do not clinch evenly, the Clincher (19) may not be centered. Loosen the two Set Screws (20) in the Clincher Holder. Move the Clincher to the desired position. Tighten screws.

Head - If the head has too much play from side to side, it can be tightened. Loosen the two lock nuts (33) which are on the side of the Head Pivot Block (43). Tighten the set screws (34) against the Head Friction Plate (32) to decrease play as desired. Tighten lock nuts. If the staples are not aligned with the clincher in the front to back direction, loosen the two screws (35) which hold down the Head Pivot Block (43). Move the head as needed and tighten screws. Be careful to keep the head aligned left to right also while making this adjustment.

Treadle - If the Treadle (4) hits the floor on the downstroke or the Head (2) does not rise far enough on the return stroke, loosen the two lock nuts (9,11) on the Adjuster Nut (10). (Note: Bottom nut has right-handed threads and the Top nut has left-handed threads.) Turn the Adjuster Nut until desired motion is achieved. Tighten lock nuts.

4. CLEARING JAMS

The F84 Stapler Head is equipped with a device which prevents the loading of a second staple until the first has cleared the head. If, however, the first staple jams, it can usually be removed using a pair of needle nosed pliers. If parts of a staple are jammed inside the front of the head, loosen the two lowest screws on the front of the head. This will open up the head enough to pull the staple or parts of a staple out. Tighten screws.

5. LUBRICATION

All pivoting and sliding joints should be oiled occasionally with a light machine oil to insure long life and superior performance of the stapler.

F84E Staplers

1. SPECIFICATIONS

Stapler Heads:	FE82HD, FE83HD, FE87HD
Type of Staple:	See Page 12
Throat Depth:	16-1/2" (419mm)
Overall Size:	22" Wide x 37" Deep x 50" High (559mm x 940mm x 1270mm)
Weight:	Shipped: 90 lb. (41 kg) Machine Only: 74 lb. (34 kg)
Accessories:	Optional Kits for the F84E Series Staplers F84EK3 Work Table Kit (Optional) F84K2 Air Drive Kit (Optional)



EYE PROTECTION which conforms to ANSI specifications and provides protection against flying particles from both FRONT and SIDE should ALWAYS be worn by the operator and others in the work area when loading, operating or servicing this tool. Eye protection is required to guard against flying fasteners and debris, which could cause severe eye injury.

The employer and/or user must ensure that proper eye protection is worn. Eye protection equipment must conform to the requirements of the American National Standards Institute, ANSI Z87.1-1979 and provide both frontal and side protection. Note: Non-side shielded spectacles and face shields alone do not provide adequate protection.



To prevent injury, never place hands or any other body part in contact with the mechanism of the tool or in the staple clinching area. Do not place hands between stapler head and clincher when operating the machine.



Care should be taken when removing face plates as supporter is held in place only by lugs on face plates, and will be ejected with considerable force.

CAUTION Do not operate the machine without work between the Driver and Clincher.

3. ADJUSTMENTS

All adjustments are factory set and **should not** need to be changed. If it becomes necessary, however, follow these directions. (Index Numbers refer to Figures 1 and 3 on subsequent pages)

Head - If the head has too much play from side to side, it can be tightened. Loosen the two lock nuts (33) which are on the side of the Head Pivot Block (43). Tighten the set screws (34) against the Head Friction Plate (32) to decrease play as desired. Tighten lock nuts. If the staples are not aligned with the clincher in the front to back or the left to right direction, loosen the two screws (35) which hold down the Head Pivot Block (43). Move the head as needed and tighten screws.

Treadle - If the Treadle (4) hits the floor on the downstroke or the Head (47) does not rise far enough on the return stroke, loosen the two lock nuts (9,11) on the Adjuster Nut (10). (Note: Bottom nut has right-handed threads and the Top nut has left-handed threads.) Turn the Adjuster Nut until desired motion is achieved. Tighten lock nuts.

4. CLEARING JAMS

If in some way staples have become clogged, they can be removed by pressing supporter back and forcing staples out of groove. Be sure wire grooves are free from pieces of wire.

5. LUBRICATION

All pivoting and sliding joints should be oiled occasionally with a light machine oil to insure long life and superior performance of the stapler. A drop of oil from the point of a toothpick in channel fro driver, on plunger spring, and in hole in front of supporter will ensure easy and trouble-free operation.

6. TO REMOVE PLUNGER ASSEMBLY

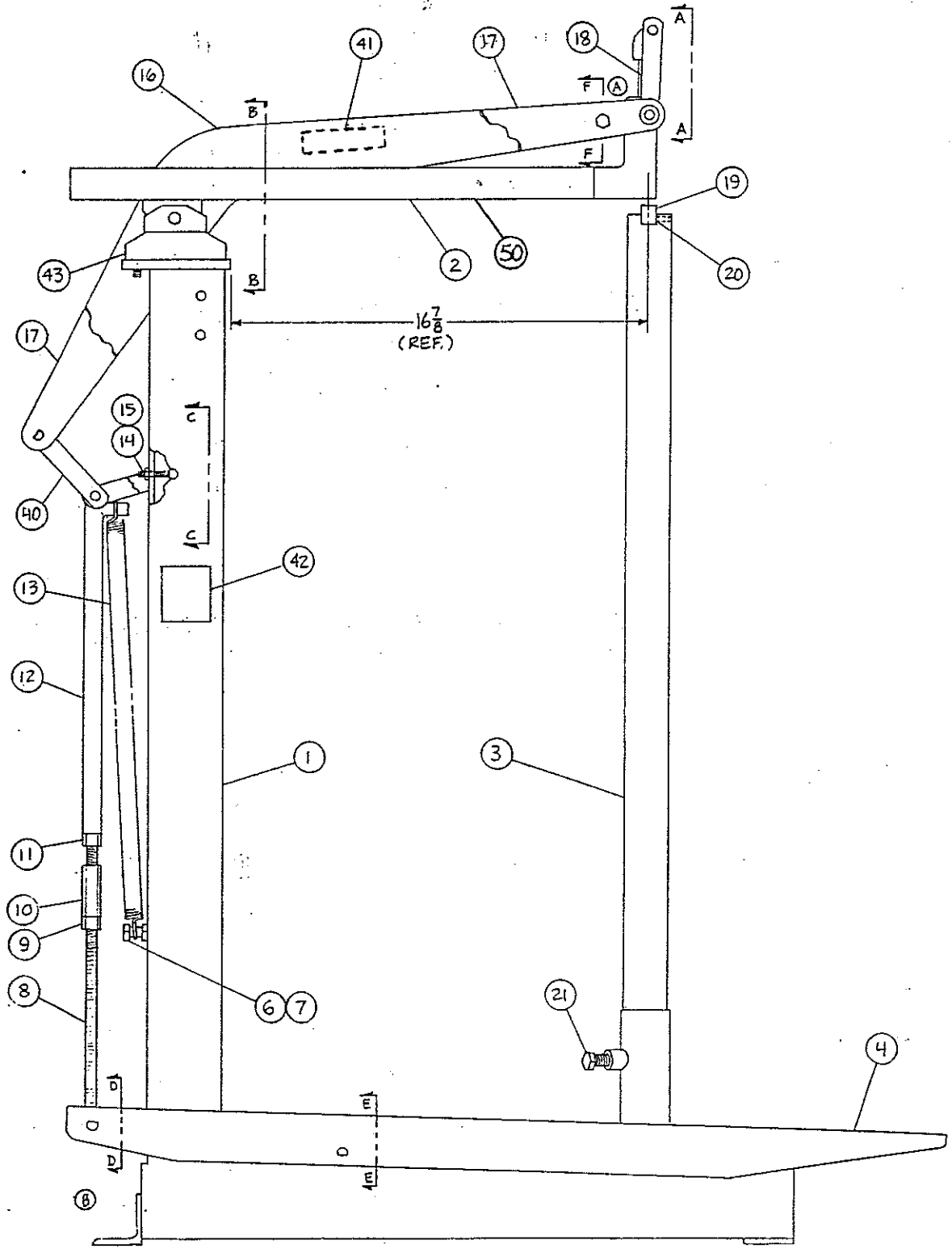
Detach feed spring from pusher and remove unused staples. Insert thin screw driver under back of driver stop, and pry forward. Plunger is left free to be removed, and will be forced up by plunger spring unless spring is broken. Pluncher spring and driver are then easily removed, cleaned, or replaced.

7. TO REMOVE FACE PLATES

Remove plunger as noted above, both upper and lower face plate bolts, also any parts attached by means of lower face plate bolt such as face plate shield. Pry apart gently-the face plates will come off and feed spring assembly can be lifted out. To install face plates, simply reverse this operation.

IMPORTANT: Face plate bolts should be brought up tight to avoid play in head.

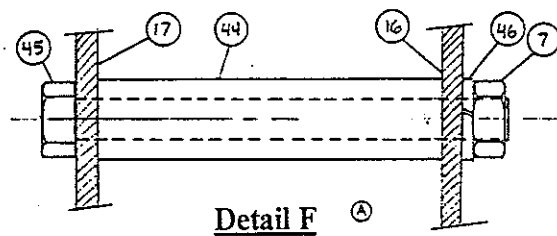
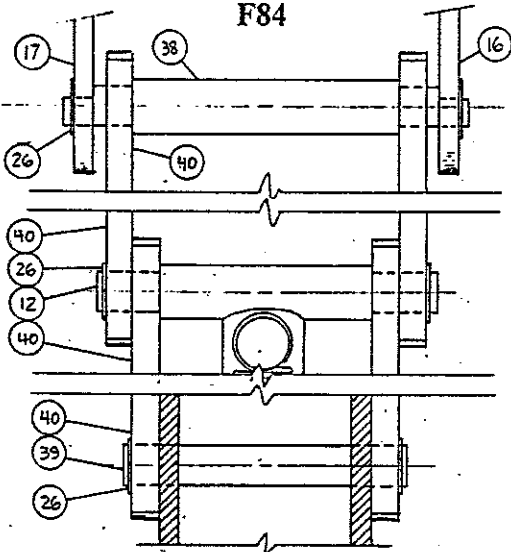
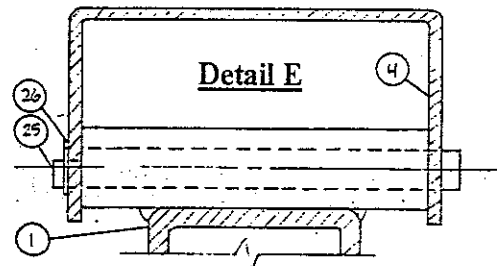
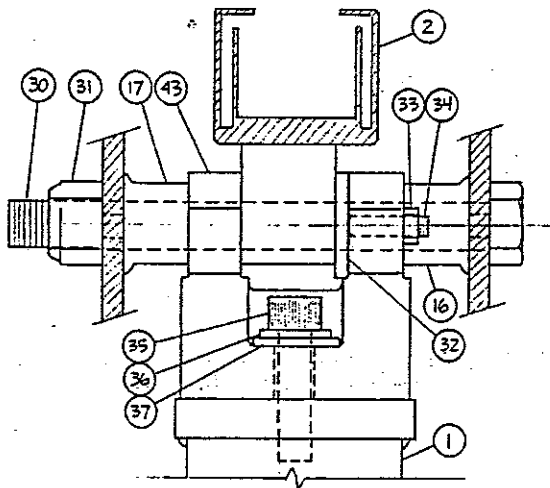
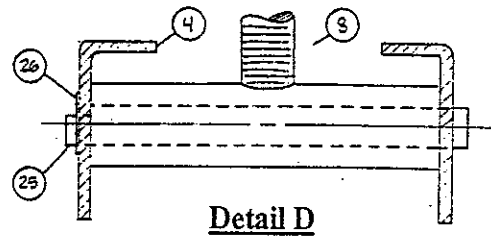
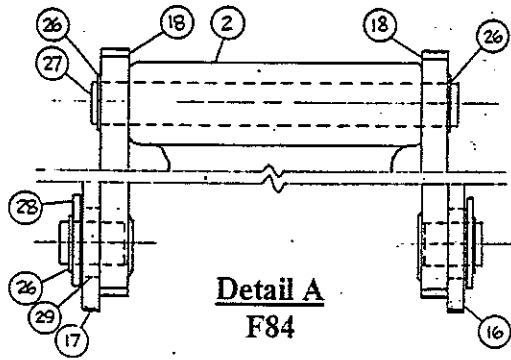
Figure 1 F84 General Assembly Diagram



F84 PARTS LIST
(Item numbers refer to Figures 1 and 2)

Item#	Part #	Description	Qty
1	MG10500A	Main Frame	1
2	F9400EDHD	Stapler Head	1
3	MG10510A	Clincher Post	1
4	MG10520	Treadle	1
6	UA6116.1	Spring Screw	1
7	HN3816	Nut, 3/8-16 Hex	2
8	MG10525A	Adjustment Tee	1
9	HN1220.4	Adjuster Lock Nut RH	1
10	PG10527	Adjustment Nut	1
11	HN1220.5	Adjuster Lock Nut LH	1
12	MG10530A	Connecting Rod	1
13	PG10537	Spring	1
14	UA4820.3	Pivot Pin Lock Screw	1
15	HN1420	Pivot Pin Lock Nut	1
16	MG10540RA	Main Lever - Right	1
17	MG10540LA	Main Lever - Left	1
18	MG10550A	Head Link	2
19	MG10516	Clincher	1
20	P7499	Clincher Set Screw	2
21	PG10512	Post Clamp Screw	1
25	PG10521	Treadle Pivot Pin	2
26	85017	Retaining Ring	12
27	PG10549	Head Top Pivot Pin	1
28	P6944	Head Link Washer	2
29	PG10552	Head Link Bushing	2
30	PG10546	Head Pivot Bolt	1
31	PG10547	Head Pivot Lock Nut	1
32	MG10548	Head Friction Plate	2
33	HN1032	Friction Plate Nut	2
34	UA3812.4	Friction Plate Screw	2
35	UA5120.5	Head Pivot Block Screw	2
36	LW516	Pivot Block Washer	2
37	PW516	Pivot Block Washer	2
38	PG10538	Lever Rear Pivot Pin	1
39	PG10536	Back Tube Pivot Pin	1
40	MG10535	Link	4
41	P12200	Stanley-Bostitch Decal	2
42	P4816	Nameplate Decal	1
43	MG10544	Head Pivot Block	1
44	MG10506B	Lever Brace	1
45	PG10571	Lever Brace Bolt	1
46	P8693	Lever Brace Washer	1

Figure 2 F84 Detail Assembly Diagrams



F84E PARTS LIST
(Item numbers refer to Figures 1,2 and 3)

Item#	Part #	Description	Qty
1	MG10500A	Main Frame	1
2	FE002	Adapter, E Head/F84	1
4	MG10520	Treadle	1
6	UA6116.1	Spring Screw	1
7	HN3816	Nut, 3/8-16 Hex	2
8	MG10525A	Adjustment Tee	1
9	HN1220.4	Adjuster Lock Nut RH	1
10	PG10527	Adjustment Nut	1
11	HN1220.5	Adjuster Lock Nut LH	1
12	MG10530A	Connecting Rod	1
13	PG10537	Spring	1
14	UA4820.3	Pivot Pin Lock Screw	1
15	HN1420	Pivot Pin Lock Nut	1
16	MG10540RB	Main Lever - Right	1
17	MG10540LB	Main Lever - Left	1
25	PG10521	Treadle Pivot Pin	2
26	85017	Retaining Ring	10
28	P6944	Head Link Washer	2
29	PG10552	Head Link Bushing	2
30	PG10546	Head Pivot Bolt	1
31	PG10547	Head Pivot Lock Nut	1
32	MG10548	Head Friction Plate	2
34	UA3812.4	Friction Plate Screw	2
35	UA5120.5	Head Pivot Block Screw	2
36	LW516	Pivot Block Washer	2
37	PW516	Pivot Block Washer	2
38	PG10538	Lever Rear Pivot Pin	1
39	PG10536	Back Tube Pivot Pin	1
40	MG10535	Link	4
41	P12200	Stanley-Bostitch Decal	2
42	P4816	Nameplate Decal	1
43	MG10544	Head Pivot Block	1
44	MG10506B	Lever Brace	1
45	PG10571	Lever Brace Bolt	1
46	P8693	Lever Brace Washer	1
47	FE83HD	Stapler Head (F84E83 Only)	1
47	FE87HD	Stapler Head (F84E87 Only)	1
48	MG10550B	Head Link Weldment	2
49	FE003	Spacer	2
50	PG10255	Screw, 1/4-20 x 5/8 FHSCS	3
51	851378	Retaining Ring	2
52	E158	Solid Clincher	1
53	MG10560B	Clincher Arm Assembly	1
54	HN3816	Nut, Hex	3
55	PG10562	Mounting Bolt	2
56	UA3810.1	Screw, Clincher	1
57	UA6824.3	Screw, 3/8-16 x 1 1/2 SHSS	1
58	P8693	Washer, 3/8 Flat Zinc	2
59	PG10267	Plug, Black 2" Square	1

Figure 3 F84E Detail Assembly Diagrams

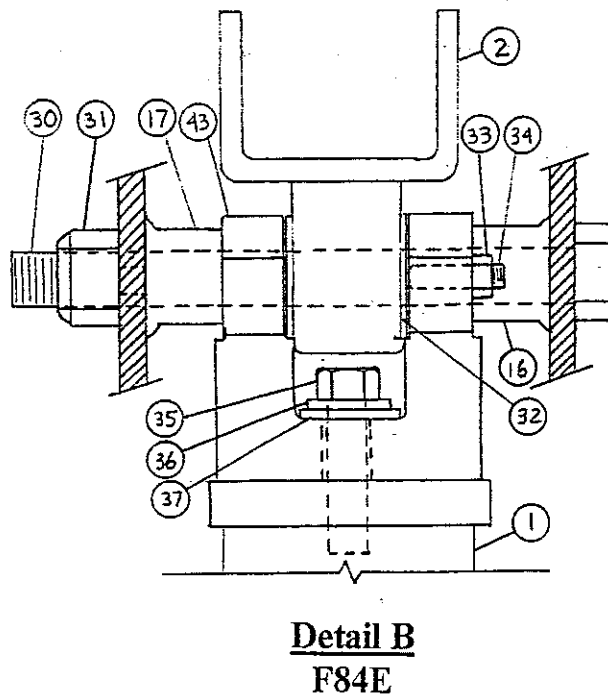
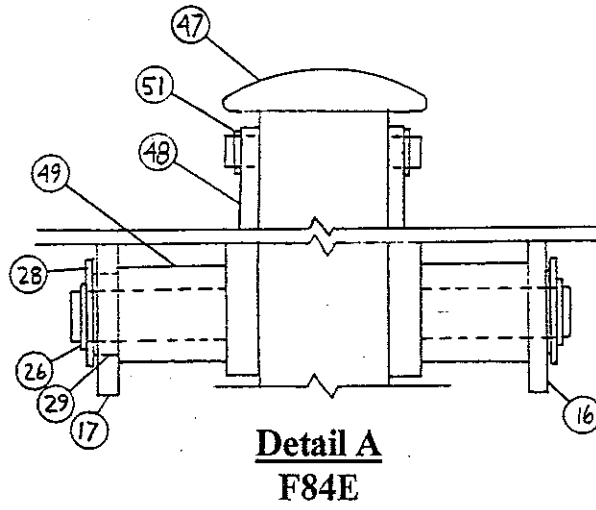
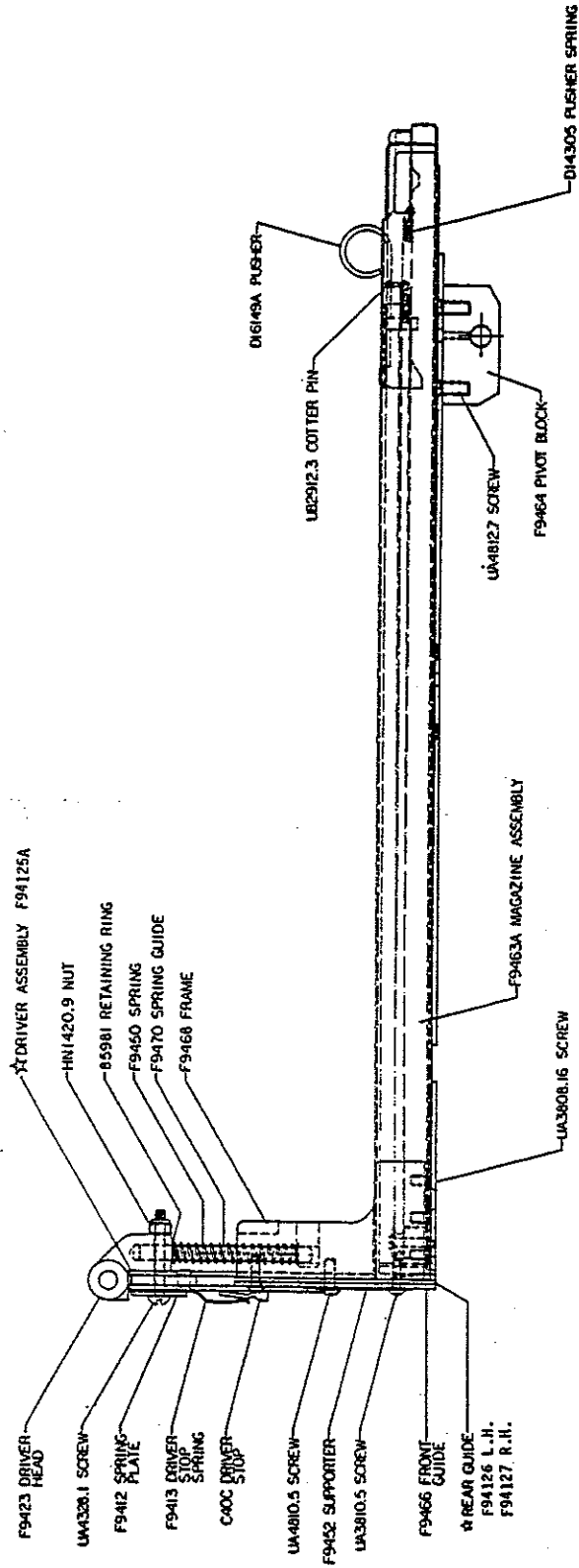


Figure 4 F9400EDHD Stapler Head



LIMITED WARRANTY

Stanley-Bostitch, Inc., warrants to the original retail purchaser that this product is free from defects in material and workmanship, and agrees to repair or replace, at Stanley-Bostitch's option, any defective products within 90 days from the date of purchase. This warranty is not transferable. It only covers damage resulting from defects in material or workmanship, and it does not cover conditions or malfunctions resulting from normal wear, neglect, abuse or accident.

THIS WARRANTY IS IN LIEU OF ALL OTHER EXPRESS WARRANTIES. ANY WARRANTY OF MERCHANTABILITY OR FITNESS FOR A PARTICULAR PURPOSE IS LIMITED TO THE DURATION OF THIS WARRANTY. STANLEY-BOSTITCH SHALL NOT BE LIABLE FOR ANY INCIDENTAL OR CONSEQUENTIAL DAMAGES.

To obtain warranty service, you must return the product at your expense together with proof of purchase to a Stanley-Bostitch Regional warranty repair center listed below or you may call us at 1-800-832-3080 for the location of additional authorized warranty service locations in your area.

EASTERN: Stanley-Bostitch, Inc., 1 Feltloc Lane, East Greenwich, R.I. 02818

MIDWEST: Stanley-Bostitch, Inc., 420 S. Kitley Ave., PO Box 19329, Indianapolis, IN 46219

SOUTHERN: Stanley-Bostitch, Inc., 5101 Fulton Ind. Blvd., Atlanta, GA 30336

WESTERN: Stanley-Bostitch, Inc., 6941 W. Goshen Ave., PO Box 111, Visalia, CA 93277

To find the Stanley-Bostitch service location nearest you, please call:

1-800-832-3080