



SETUP, PARTS & MAINTENANCE MANUAL 2 BAG CATCHER

MODELS:

970338	2 BAG CATCHER, 36
970339	2 BAG CATCHER, 42/61
970340	2 BAG CATCHER, 48
970341	2 BAG CATCHER, 52



WARNING: If incorrectly used this machine can cause severe injury. Those who use and maintain this machine should be trained in its proper use, warned of its dangers and should read the entire manual before attempting to set up, operate, adjust or service the machine.

4155023 REV D

Contents

Section 1	1-1
Safety Information	1-1
Frequently Ordered Parts	1-2
Torque Specifications	1-2
Section 2	2-1
2 Bag Catcher Mount Installation	2-2
2 Bag Catcher Mount Installation Parts List	2-3
2 Bag Catcher Mount and Catcher Installation Instructions	2-3
Section 3	3-1
2-Bag Catcher Assembly	3-2
2-Bag Catcher Assembly Parts List	3-3
Section 4	4-1
36" Deck-Blower Assembly Illustration	4-2
36" Deck-Blower Assembly Parts List	4-3
36" Deck-Blower Mount Illustration	4-4
36" Deck-Blower Mount Parts List	4-4
36" Deck-Blower Installation Instructions	4-5
36" Deck-Blower Belt Routing	4-6
36" Deck-Blower Idler Position Diagram	4-6
36" Deck-Blower Maintenance Instructions	4-6
Section 5	5-1
42", 48' & 52" Decks-Blower Assembly Illustration	5-2
42", 48' & 52" Decks-Blower Assembly Parts List	5-3
42", 48' & 52" Decks-Blower Mount Illustration	5-4
42", 48' & 52" Decks-Blower Mount Parts List	5-4
42", 48' & 52" Decks-Blower Installation Instructions	5-5
42", 48' & 52" Decks-Blower Belt Routing	5-6
42", 48' & 52" Decks-Blower Maintenance Instructions	5-6
42", 48" & 52" Decks-Blower Idler Position Diagram	5-7
Section 6	6-1
36" & 42" Decks-Weight Installation E series	6-2
36" & 42" Decks-Weight Installation	6-3
36" & 42" Decks-Weight System Parts lists	6-4
48" & 52" Decks-Weight System Installation E series	6-5
48" & 52" Decks-Weight System Installation	6-6
48" & 52" Decks-Weight System Parts List	6-7

Section 1

Safety Information

NOTICE!!!

Unauthorized modifications may present extreme safety hazards to operators and bystanders and could also result in product damage.

The manufacturer strongly warns against, rejects, and disclaims any modifications, add-on accessories or product alterations that are not designed, developed, tested, and approved by the original equipment manufacturer. Any product that is altered, modified, or changed in any manner not specifically authorized after original manufacture including the addition of "after-market" accessories or component parts not specifically approved for use by the original equipment manufacturer will result in the product warranty being voided.

Any and all liability for personal injury and/or property damage caused by any unauthorized modifications, add-on accessories, or products not approved by the original equipment manufacturer will be considered the responsibility of the individual(s) or company designing and/or making such changes. This manufacturer will vigorously pursue full indemnification and costs from any party responsible for such unauthorized post-manufacture modifications and/or accessories should personal injury and/or property damage result.

OPERATING SAFELY

Do not operate the machine without either the discharge chute or the grass catcher fully installed.

Stop the engine, disengage the PTO and wait until the blades quit rotating before removing the grass catcher.

Stop the engine, disengage the PTO, and disconnect the spark plug wires or remove the key when stopping operation to clear blockages, unclog, inspect the attachment, or do maintenance or repair.

If the machine begins to vibrate during operation. Read and understand all operation and safety precautions associated with operating your machine on slopes and in other hazardous conditions. Do not attempt to exceed abnormally or make abnormal sounds stop the engine, disengage the PTO, and disconnect the spark plug wires. Inspect the attachment and have necessary repairs performed by a qualified technician.

Use extra care with grass catchers. These attachments can change the stability of the machine as well as dynamically altering the stability these recommendations with your grass collection system attached.

Only operate the catcher attachment with all guards and counter-balance weights fully installed.

Inspect grass catcher components regularly. If worn, damaged or deteriorated, they may expose moving parts or allow objects to be thrown.

Mow only in daylight.

Check operator presence interlock system and brake operation prior to each days use. Adjust or repair any problems before using.

Clear the area to be mowed of objects such as rocks, toys, wire, or other debris that may be picked up or thrown by the catcher.

Be sure the area is clear of pets and people, especially young children. Never assume they will remain where you last saw them. Stop the machine if any enter the area.

Evaluate the terrain to determine if the machine can safely perform the job. Remember that slopes and irregular terrain may cause tires to lose traction resulting in loss of control. Use extreme caution on wet grass, as this will increase the risk.

Note: When ordering parts, you must use the part number as shown for each part, not the index number. Always give the model number to your parts and/or service representative.

Frequently Ordered Parts

PART NUMBER	DESCRIPTION
4155015	36" DECK "V" BELT
4137080	42" DECK "V" BELT
4137076	48" DECK "V" BELT
4137076	52" DECK "V" BELT
4141806	2-BAG COMMERCIAL FABRIC CAP WITH "J" STRIP-PLAIN
4137072	COMMERCIAL CLOTH BAG WITH HANDLE (NO FRAME)
4137066	DISCHARGE HOSE

Note: When ordering parts, you must use the part number as shown for each part, not the index number. Always give the model and serial number to your parts and/or service representative.

Illustrations used were current at the time of printing, but subsequent production changes may cause your catcher to vary slightly in detail. Humboldt Specialty Manufacturing Company reserves the right to redesign and change the catcher as deemed necessary, without notification. If a change has been made to your catcher which is not reflected in this parts manual, see your dealer for current information and parts.

Torque Specifications

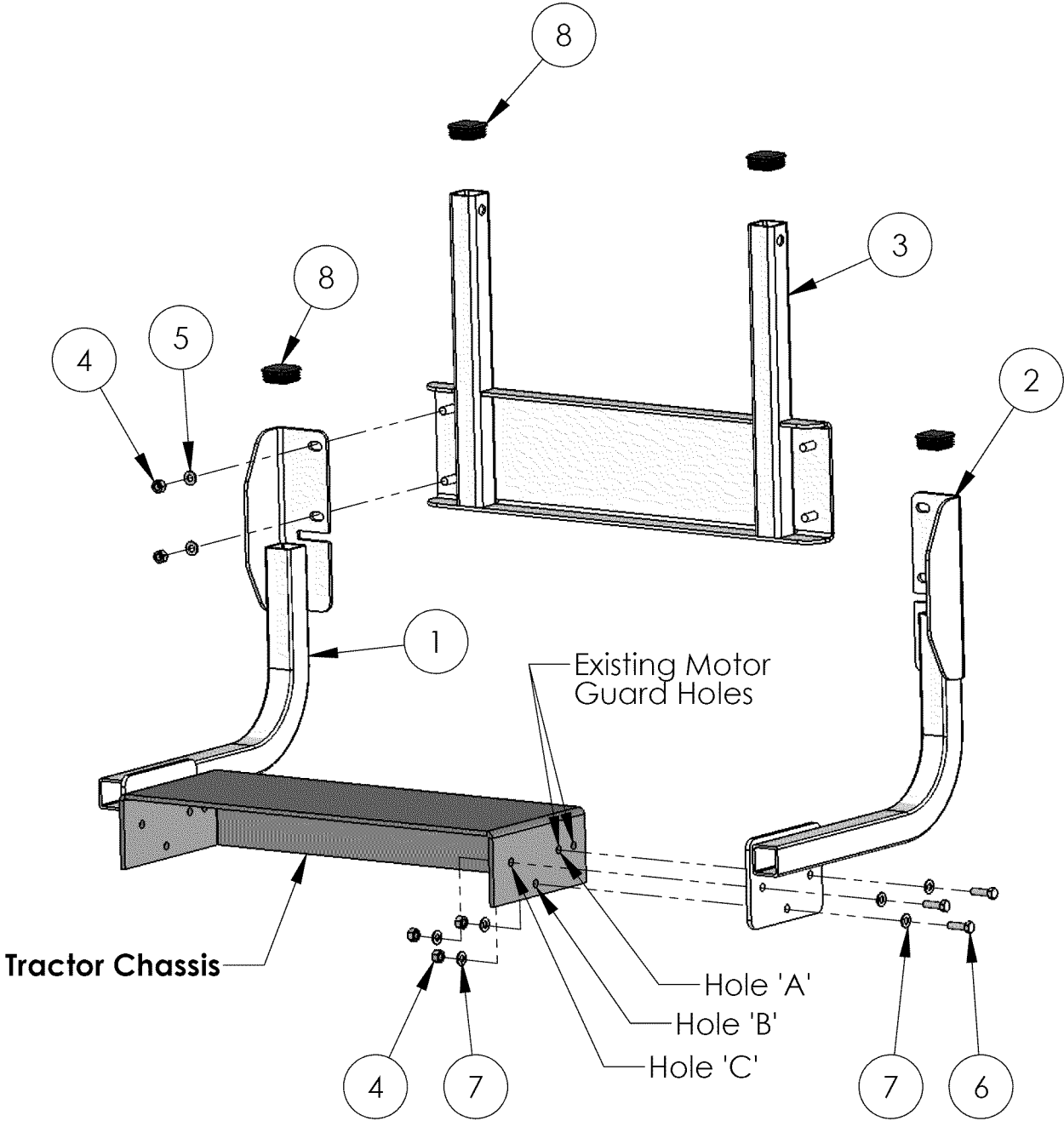
The following chart lists the standard torque values for the threaded fasteners found in this manual. Torque all cap screws, nuts and set screws to the set values unless a different torque is shown in the Notes section next to the fastener.

SIZE	FT-LBS	NM
1/4"	8.2	11.1
5/16"	17	23
3/8"	30	40
1/2"	73	99
1"	625	850

Section 2

2 Bag Catcher Mount Installation	2-2
2 Bag Catcher Mount Installation Parts List.....	2-3
2 Bag Catcher Mount and Catcher Installation Instructions.....	2-3

2 Bag Catcher Mount Installation



2 Bag Catcher Mount Installation Parts List

Index	Part No.	Qty	Description
1	4155017	1	RIGHT SIDE SUPPORT
2	4155018	1	LEFT SIDE SUPPORT
3	4141834	1	2 BAG CATCHER SUPPORT MOUNTING PANEL
4	64229-03	10	HEX NUT, NYLON INSERT-3/8"-16
5	64163-87	4	FLAT WASHER-5/16"
6	64123-70	6	CAP SCREW-3/8"-16 X 1 1/2" LONG G5
7	64163-31	12	FLAT WASHER-3/8"
8	4139388	4	HOLE PLUG-SQUARE

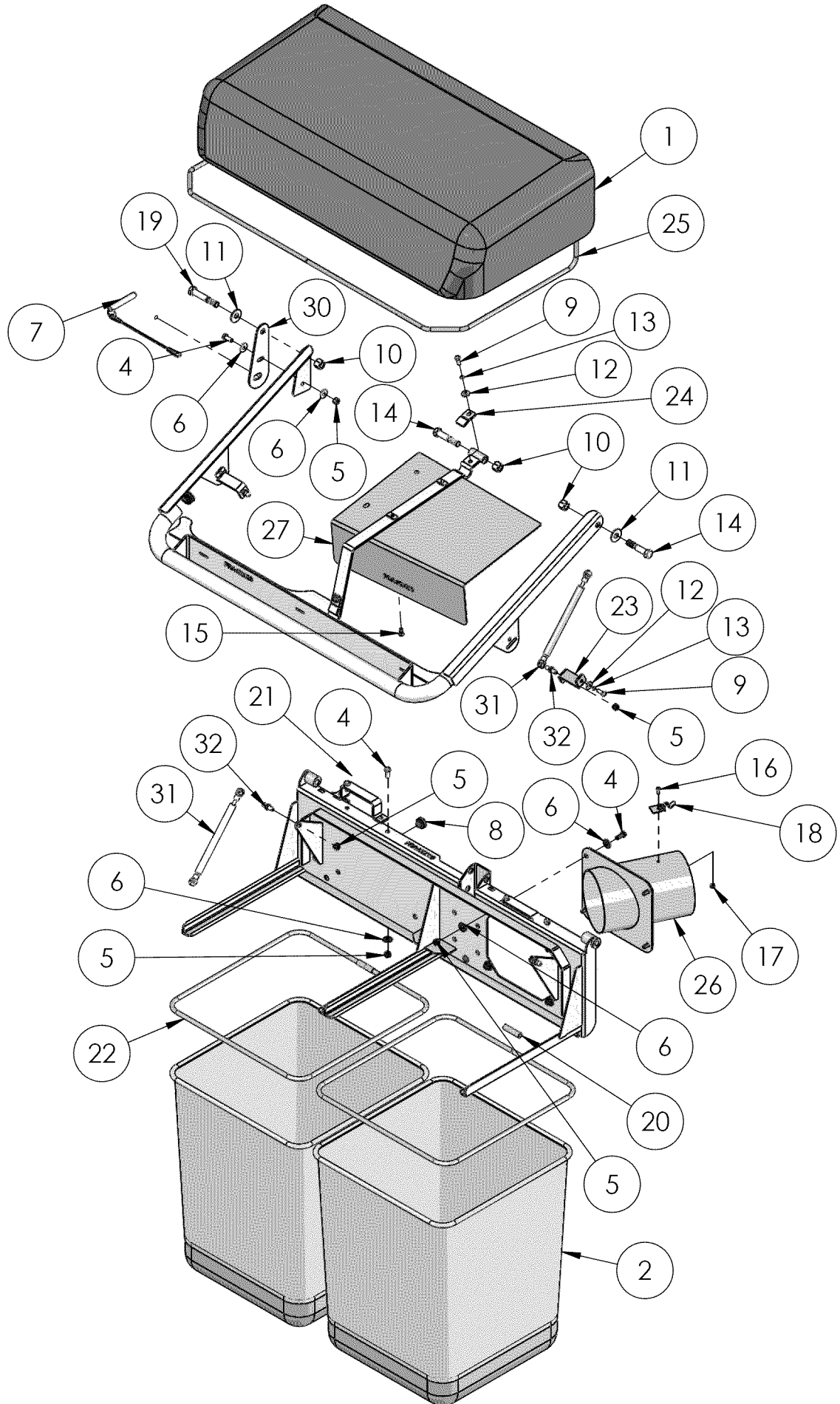
2 Bag Catcher Mount & 2 Bag Catcher Installation Instructions

1. Remove front engine guard mounting bolt 'A' on the right side and install right side catcher support (1) with supplied 3/8" x 1 1/2" Cap Screw (6), Washers (7) and Nuts (4).
2. Position upright portion of Right Side Support (1) to a vertical position.
3. Clamp in place and using Right Side Support (1) as a drill guide, drill holes 'B' and 'C'.
4. Loosely secure Right Side Support (1) with supplied 3/8" x 1 1/2" Cap Screw (6), Washers (7) and Nuts (4).
5. Remove front engine guard mounting bolt 'A' on the left side and install Left Side Catcher Support (1) with supplied 3/8" x 1 1/2" Cap Screw (6), Washers (7) and Nuts (4)
6. Position upright portion of Left Side Support (2) to a vertical position
7. Clamp in place and using Left Side Support (2) as a drill guide, drill holes 'B' and 'C'.
8. Loosely secure Left Side Support (2) with supplied 3/8" x 1 1/2" Cap Screw (6), Washers (7) and Nuts (4).
9. Install catcher mount (3) with 5/16" flat washers (5) and 3/8" nuts (4) supplied.
10. Tighten all installed hardware at this time.
11. On the main catcher assembly, remove two 1/2" diameter detent pins in the center ribs.
12. Lift catcher assembly onto the catcher mount and re-install detent pins.
13. Remove the detent pin in the travel lock to release the catcher cover assembly.
14. Lift catcher cover assembly to install bags.
15. Install bags with the solid panel towards the mower.

Section 3

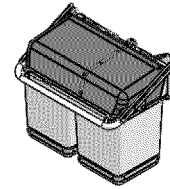
2-Bag Catcher Assembly.....	3-2
2-Bag Catcher Assembly Parts List.....	3-3

2-BAG CATCHER PARTS LIST



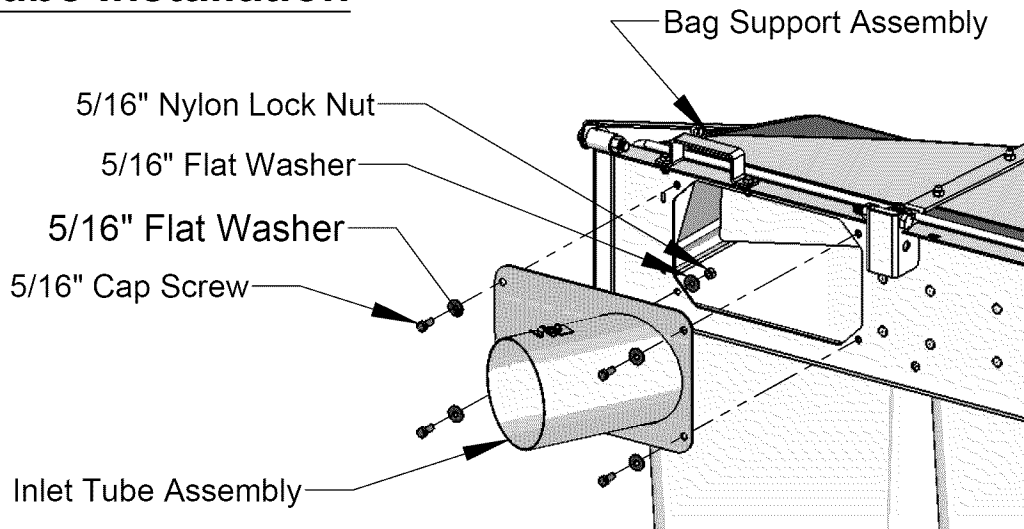
2 BAG CATCHER PARTS LIST

SGC



ITEM NO.	SGC PART#	DESCRIPTION	QTY.
1	4141806	AIR DOME (2-BAG) Extended	1
2	4137072	CATCHER BAG, COMMERCIAL	2
3	4139389	1.5" HOLE PLUG, PLASTIC	2
4	64123-64	CAP SCREW 5/16-18 x .75	9
5	64229-02	5/16-18 Nylon Insert Nut	13
6	64163-87	5/16" Flat Washer	14
7	4137069	DETENT PIN	1
8	4137073	RUBBER BUMPER	2
9	64123-06	CAP SCREW 1/4-20 x .75	4
10	64229-05	1/2-13 Nylon Insert Nut	3
11	64163-19	1/2" Flat Washer	2
12	64163-55	1/4" USS WASHER	4
13	64006-01	1/4" Lockwasher	4
14	64123-72	CS 1/2-13 X 2.5 G5	2
15	64123-49	1/4-20 X 1/2 G5	2
16	64152-06	#10 x 1/2" SCREW	1
17	64229-10	#10-24 Nylon Insert Nut	1
18	4137093	SPRING CLIP	1
19	64126-31	CS 1/2-13 X 3 G5	1
20	4137461	TUBE, PLASTIC 1/2" OD x 3/8 ID	2
21	4137074	Bag Handle	2
22	4137071	BAG FRAME	2
23	4137060	Gas Cylinder Mount	2
24	4139391	BRACKET MOUNT	2
25	4141832	AIR DOME FRAME (2-BAG)	1
26	4147578	2 BAG INLET TUBE	1
27	4141830	2 BAG DEFLECTOR	1
28	4141833	COMMERCIAL 2-BAG CAP FRAME	1
29	4141831	Commercial 2 Bag Support Mount	1
30	4167342.7	DFS Adjustable Lock Plate	1
31	4137070	GAS CYLINDER, 6x15 LOM 375 EXT	2
32	4137063	BALL JOINT	4

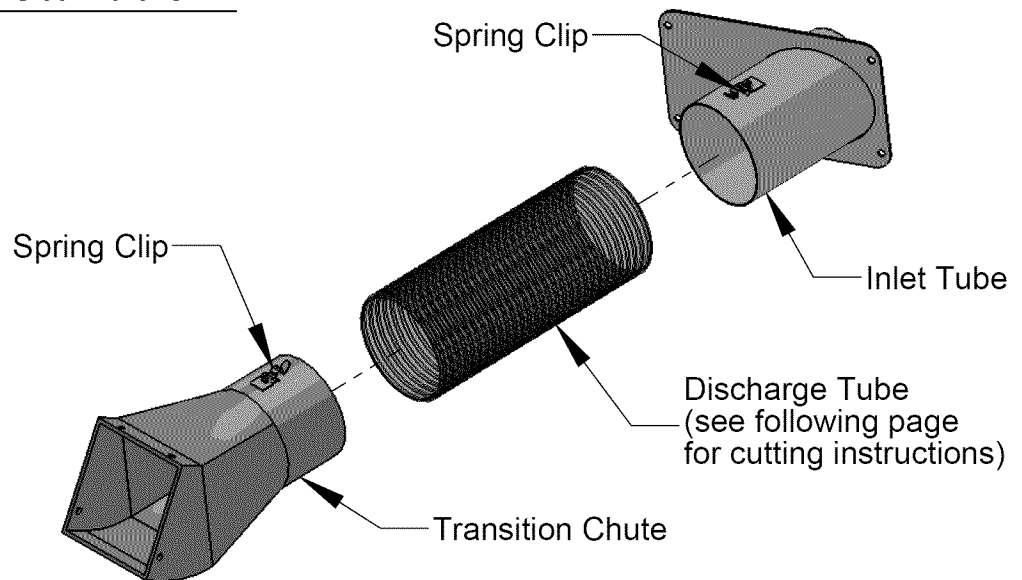
Inlet Tube Installation



Initial Installation:

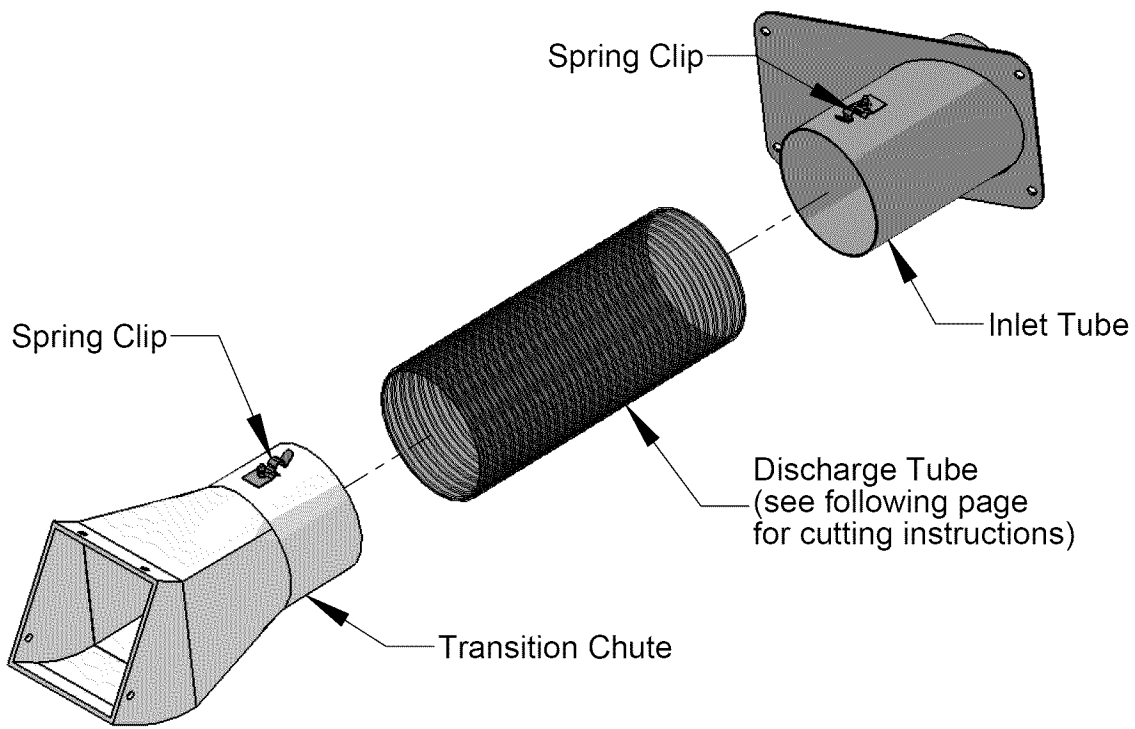
1. This operation to be performed only on the initial installation.
2. Orient the inlet tube assembly with the spring clip on the top of the tube.
3. Insert the short end of the tube into the opening of the bag support.
4. Install 5/16" Cap Screws with Flat Washers and secure with 5/16" Nuts.

Discharge Hose Installation:



1. Open Spring Clip on Inlet Tube of Catcher Assembly.
2. Slide Discharge Tube over Inlet Tube on Catcher Assembly.
3. Assembly may be eased by using 'Lemon Furniture Polish' on initial installation.
4. Close Spring Clip over raised rib to secure Discharge Tube.
5. Open Spring Clip on Transition Chute of Blower Assembly.
6. Slide remaining end of Discharge Tube over Transition Chute.
7. Close Spring Clip over raised rib to secure Discharge Tube.

Discharge Hose Installation:

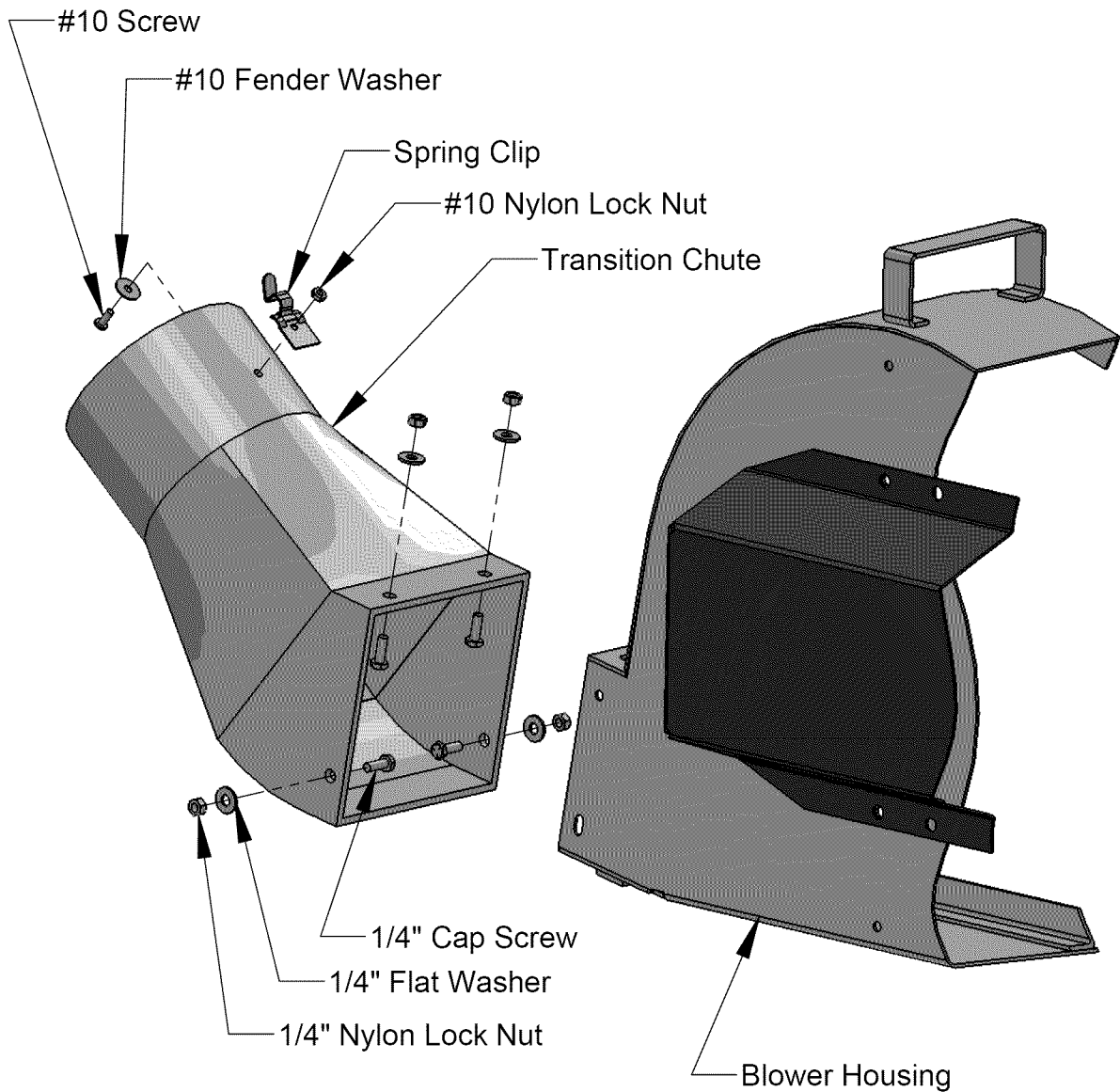


1. Open Spring Clip on Inlet Tube of Catcher Assembly.
2. Slide Discharge Tube over Inlet Tube on Catcher Assembly.
3. Assembly may be eased by using 'Lemon Furniture Polish' on initial installation.
4. Close Spring Clip over raised rib to secure Discharge Tube.
5. Open Spring Clip on Transition Chute of Blower Assembly.
6. Slide remaining end of Discharge Tube over Transition Chute.
7. Close Spring Clip over raised rib to secure Discharge Tube.

Section 4

36" Deck-Blower Assembly Illustration.....	4-2
36" Deck-Blower Assembly 36" Parts List.....	4-3
36" Deck-Blower Mount Illustration.....	4-4
36" Deck-Blower Mount 36" Parts List.....	4-4
36" Deck-Blower Installation Instructions.....	4-5
36" Deck-Blower Belt Routing.....	4-6
36" Decks-Blower Idler Position Diagram.....	4-6
36" Deck-Blower Maintenance Instructions.....	4-6

Transition Chute Installation Instructions:

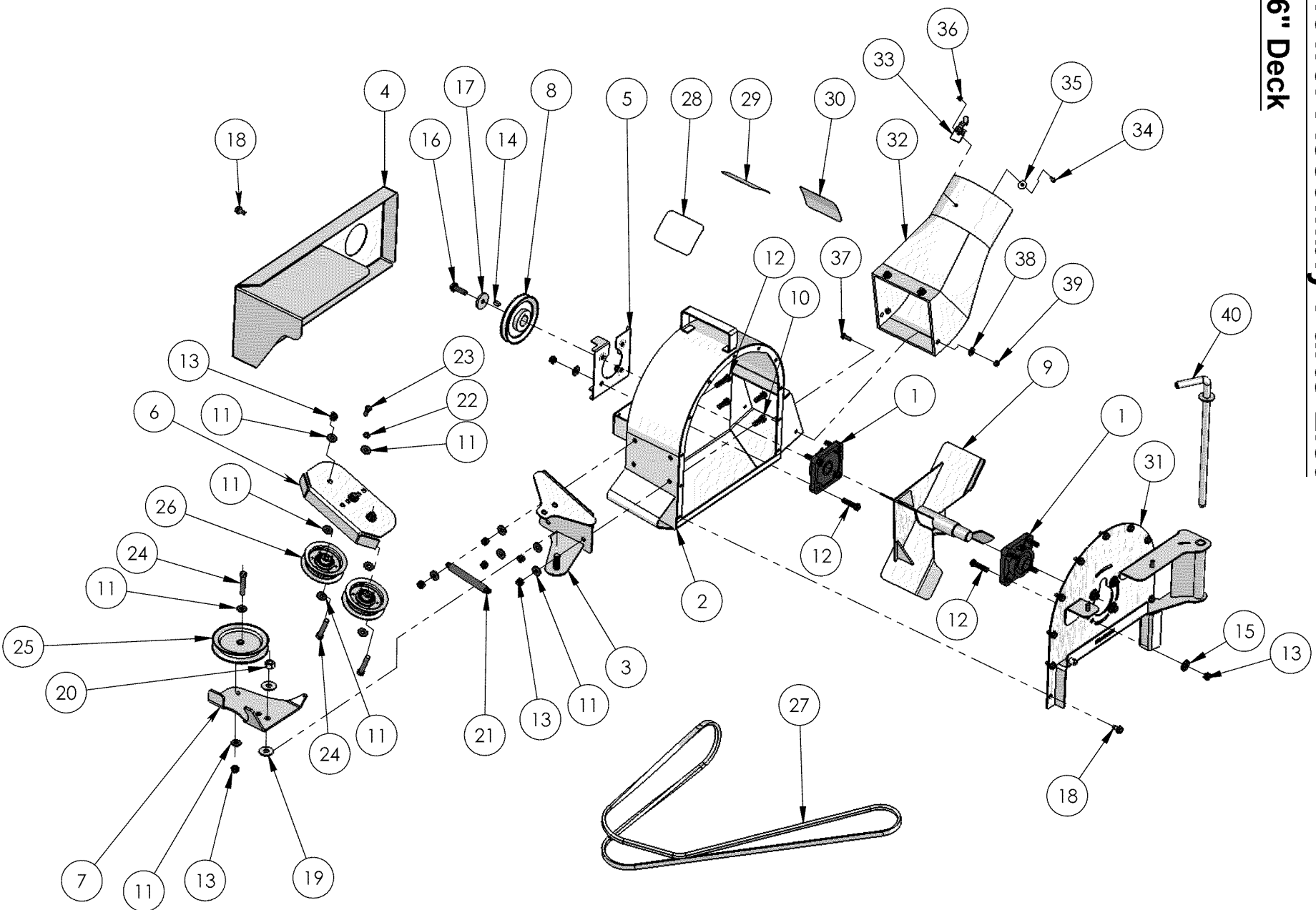


Installation Instructions:

1. Position square opening of Transition Chute over square opening of Blower
2. Install 1/4" Cap Screw with head to inside thru blower and Transition Chute.
3. Secure loosely with Flat Washer and 1/4" Nylon Lock Nut.
4. Repeat procedure for remaining 3 Cap Screws, Flat Washers and Nuts.
5. Tighten all hardware at this time.

Blower Assembly Parts List

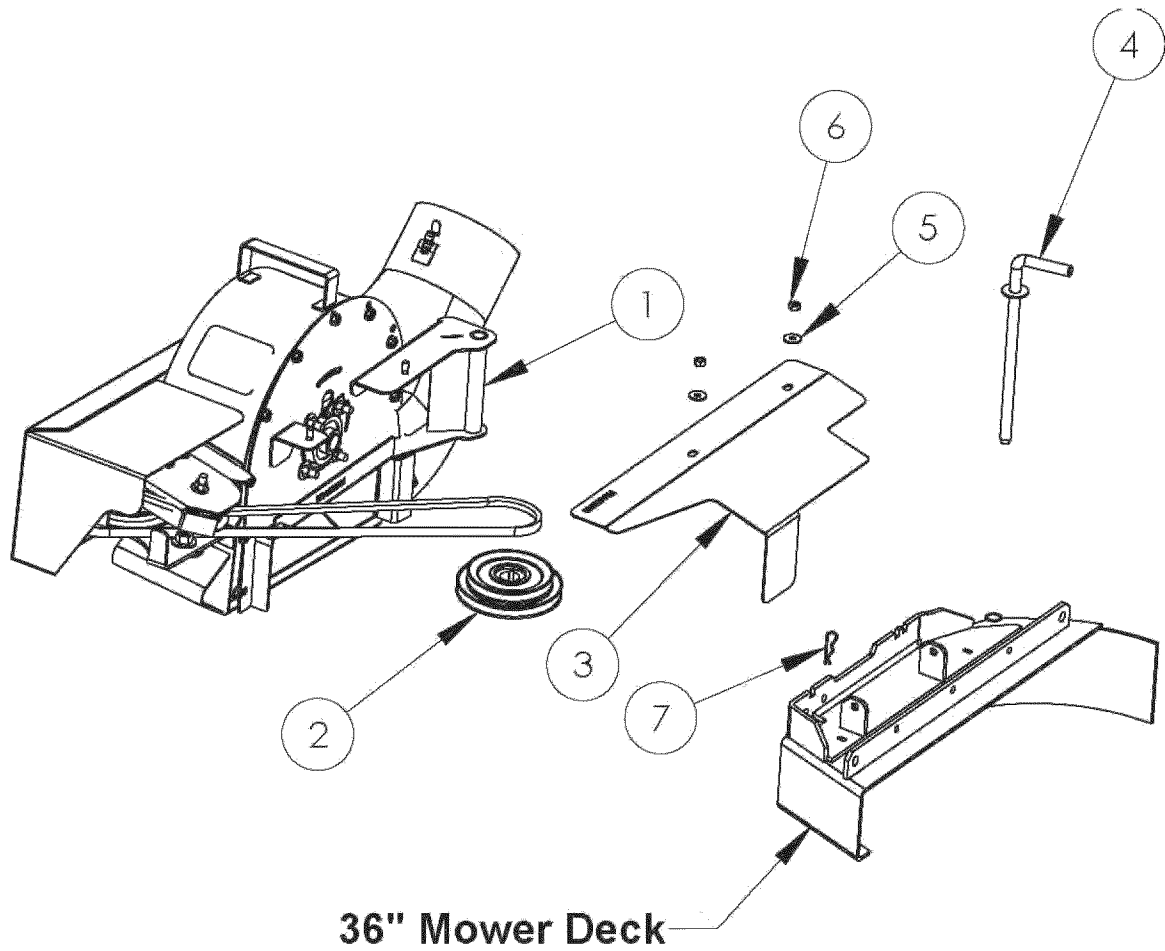
36" Deck



36" Deck-Blower Assembly Parts List

Index	Part No.	Qty	Description
1	4137092	2	BEARING, 4 BOLT FLANGE
2	4155004	1	15" BLOWER HOUSING
3	4155010	1	IDLER MOUNT
4	4155013	1	BLOWER BELT COVER
5	4155006	1	BLOWER BELT GUIDE
6	4155008	1	IDLER MOUNTING PLATE
7	4155009	1	BELT TENSION PLATE
8	4164728	1	4" DRIVE PULLEY 1" ID
9	4155005	1	IMPELLER ASSEMBLY, VERTICAL 15"
10	64123-50	3	CAP SCREW, 3/8"-16 X 1" LONG
11	64163-87	17	FLAT WASHER-5/16"
12	64123-70	9	CAP SCREW, 3/8"-16 X 1 1/2" LONG
13	64229-03	16	HEX NUT, NYLON INSERT-3/8"-16
14	4155007	1	KEY
15	64163-31		FLAT WASHER, 3/8" SAE
16	4155012	1	BOLT, SERRATED PFLANGE 3/8" X 16 X 1 1/4" LONG
17	4155011	1	FLAT WASHER-THICK
18	64197-001	15	BOLT-TDFM 5/16-18 X 3/4
19	64163-79	2	FLAT WASHER-1/2"
20	64229-05	1	HEX NUT, NYLON INSERT-1/2"-13
21	4137089	1	IDLER SPRING
22	4155014	1	LOCK WASHER, 5/16"
23	64123-54	2	CAP SCREW, 5/16"-18 X 3/4" LONG
24	64123-67	3	CAP SCREW, 3/8"-16 X 2" LONG
25	4137445	1	IDLER PULLEY, 5"
26	4137087	2	IDLER PULLEY
27	4155015	1	BELT-36" DECK
28	4139398	1	LABEL, WARNING, THROWN OBJECTS
29	4139400	1	LABEL, WARNING, TURN OFF MOWER
30	4139399	1	LABEL, DANGER, ROTATING BLADES
31	4155002	1	BLOWER COVER/MOUNT
32	4137086	1	TRANSITION CHUTE
33	4137093	1	SPRING CLIP
34	64152-06	1	MACHINE SCREW-#10-24 X 1/2" LONG
35	4139403	1	FENDER WASHER-#10
36	64229-10	1	HEX NUT, NYLON INSERT-#10-24
37	64123-06	1	CAP SCREW, 1/4"-20 X 3/4" LONG
38	64163-55	4	FLAT WASHER-1/4" USS
39	64229-01	4	HEX NUT, NYLON INSERT-1/4-20
40	4137085	1	MOUNTING PIN

36" Deck Blower Mount Illustration



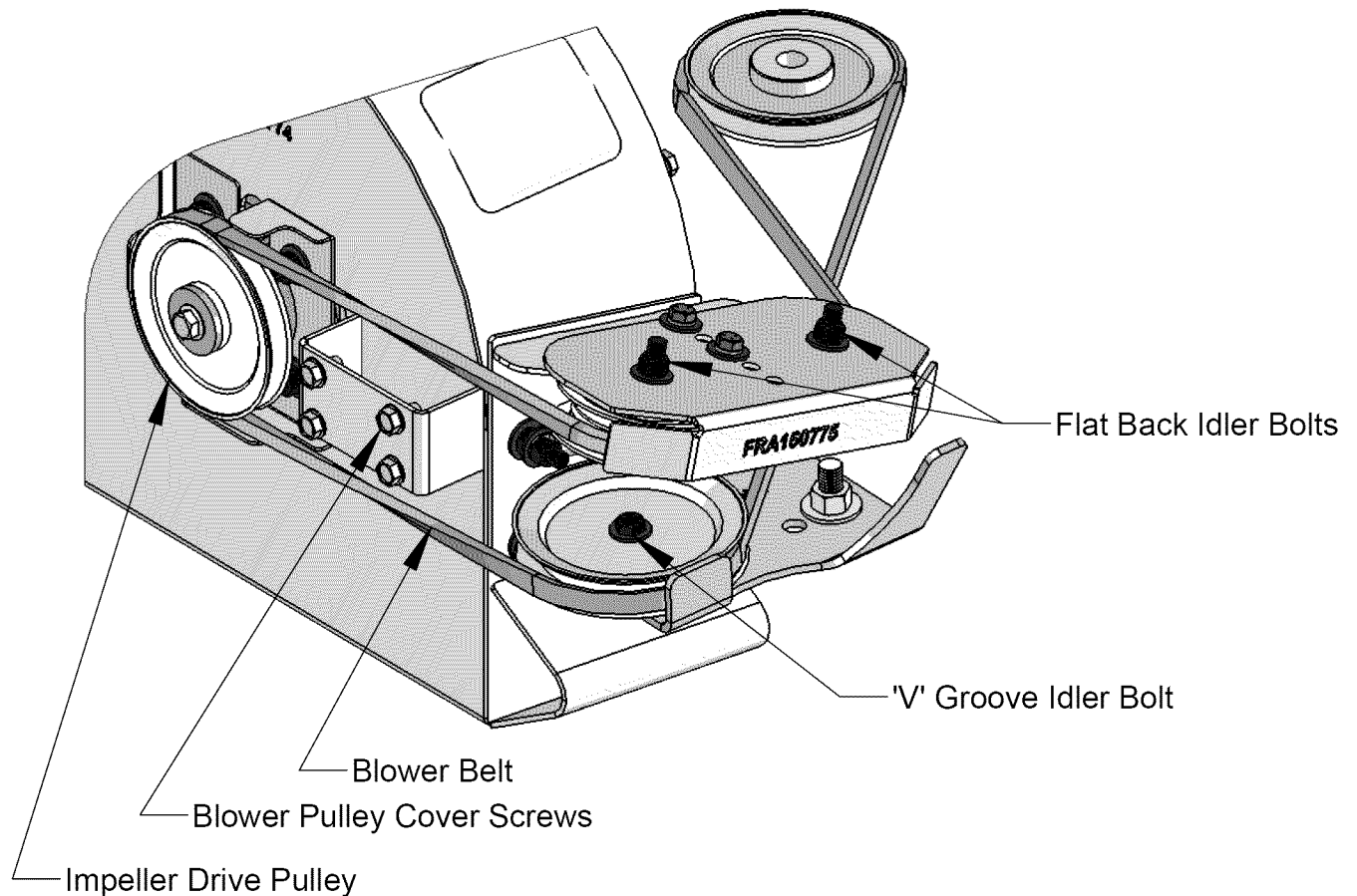
36" Deck Blower Mount Parts List

Index	Part No.	Qty	Description
1	4155002	1	36" DECK-BLOWER MOUNT
2	4155003	1	36" DECK-DOUBLE PULLEY
3	4155026	1	36" DECK BELT/PULLEY COVER
4	4137085	1	PIN-BLOWER MOUNTING
5	64163-87	2	5/16 FLAT WASHER
6	64229-02	2	5/16-18 NUT-NYLON INSERT
7	4139402	1	PIN-HAIR

36” DECK-BLOWER INSTALLATION INSTRUCTIONS

1. Remove factory discharge chute and save hardware.
2. Remove factory belt guard and retain attaching hardware.
3. Loosen deck drive belt. Remove factory spindle pulley and retain hardware.
4. Install Double Pulley **(2)** using retained hardware.
5. Place rear of blower mount **(1)** over tube on the rear of the deck.
6. Insert 'L' Pin **(4)** into tube on blower mount and thru hole on rear side of deck.
7. Swing blower into place. Note: Small pin should pass thru slot on rib.
8. Secure blower with hairpin **(7)**.
9. Install belt onto the double pulley on the deck. Note: Belt should form an 'X' pattern
10. Install pulley cover **(3)** and tighten hardware

15" Blower Belt Routing and Replacement Instructions



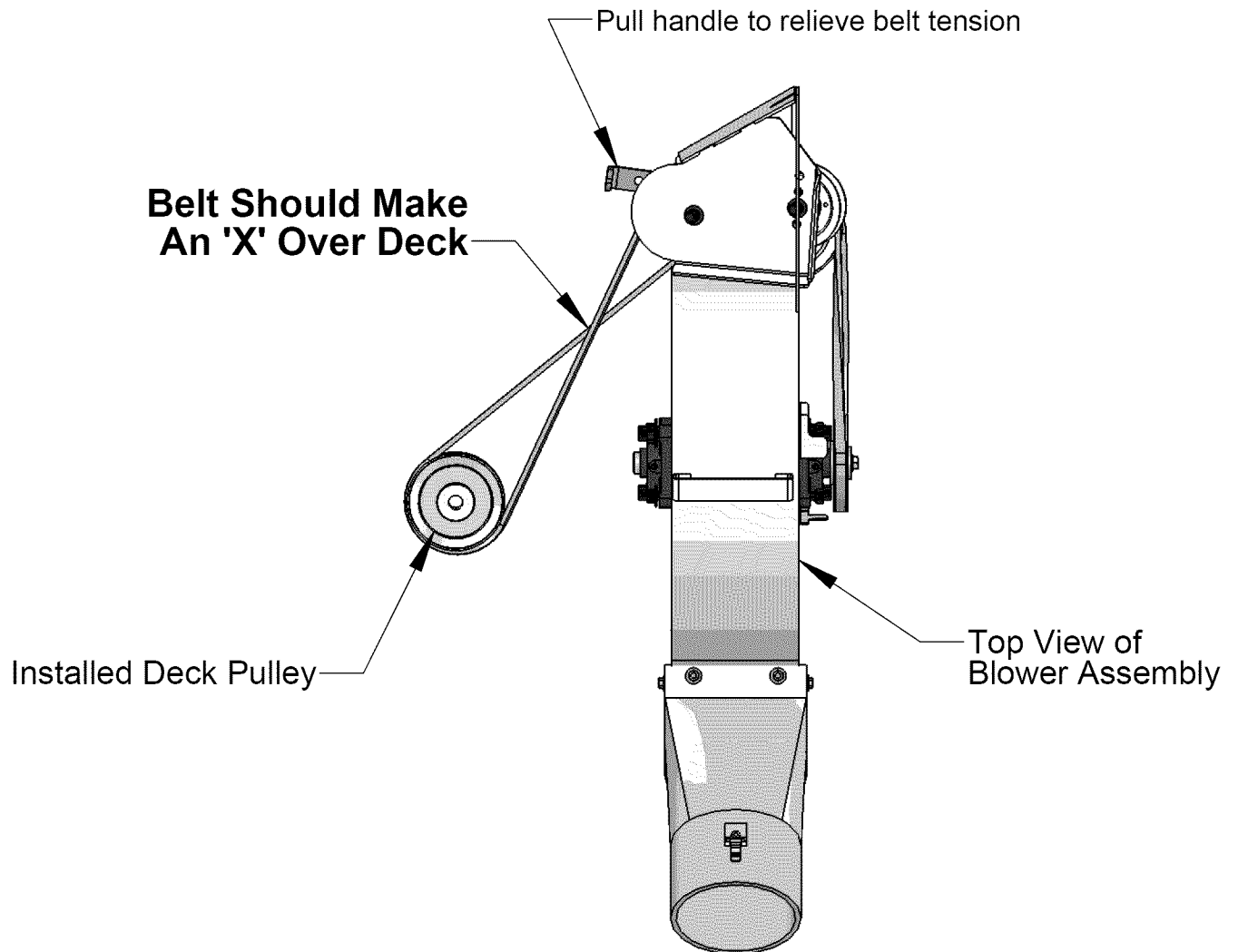
Belt Removal:

1. Remove four Blower Pulley Cover Screws
2. Remove Blower Pulley Cover.
3. Loosen Flatback Idler Bolts, no need to remove completely.
4. Loosen 'V' Groove Idler Bolt, no need to remove completely.
5. Remove Belt from under Belt Guide on Impeller Drive Pulley.
6. Remove Belt from Flatback Idlers.
7. Remove Belt from the V Groove Pulley.
8. Pull belt from Blower Assembly.

Belt Replacement:

1. Install Belt under Belt Guide on the Impeller Drive Pulley.
2. Feed remainder of belt between Top Idlers and Bottom Idler and out of opposite side of Blower Assembly.
3. Install Belt into groove of 'V' Groove Idler.
4. Tighten 'V' Groove Idler Bolt to maintain belt position.
5. Twist Belt counterclockwise a quarter turn to position backside of Belt to ride on the Flatback Idlers.
6. Tighten Flatback Idler Bolts to maintain belt position.
7. Pull Belt slack to mower side of Blower and recheck belt position..
8. Replace Blower Pulley Cover.

Belt Routing on Mower Deck Pulley



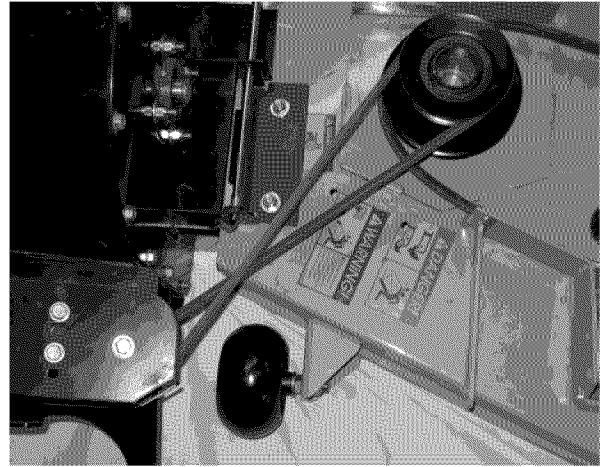
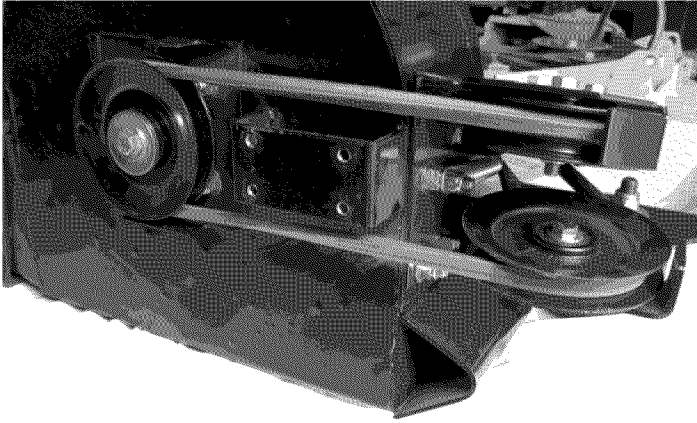
Belt Installation onto Mower Deck

1. Install Blower Assembly onto Mower Deck
2. Pull on handle on front of Blower Assembly to extend Belt.
3. With handle pulled back, place belt onto Deck Pulley
4. Make sure Belt makes an 'X' over the Deck.
5. Release handle to tension the Belt.
6. Install Deck Pulley Cover.

Belt Fit Tips:

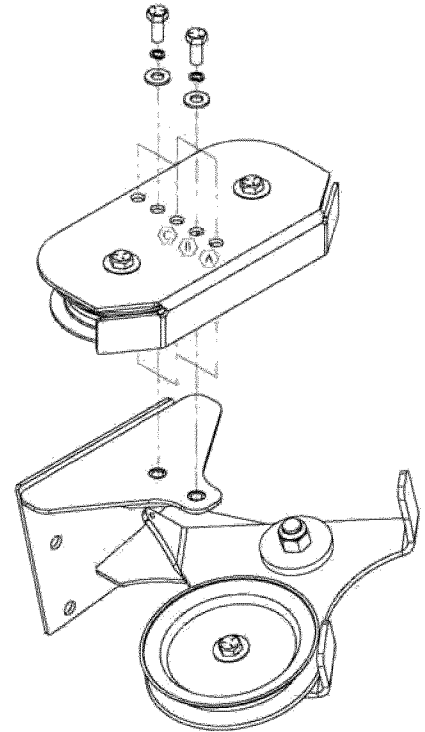
The system is designed to have a loose fitting belt. it is normal to have the 3-4 inches of movement in the belt with the tensioner engaged. Make sure the belt makes an "X", if it doesnt the system will not collect clippings.

BLOWER BELT ROUTING



36" Deck-BLOWER IDLER POSITION

36" Deck Position A



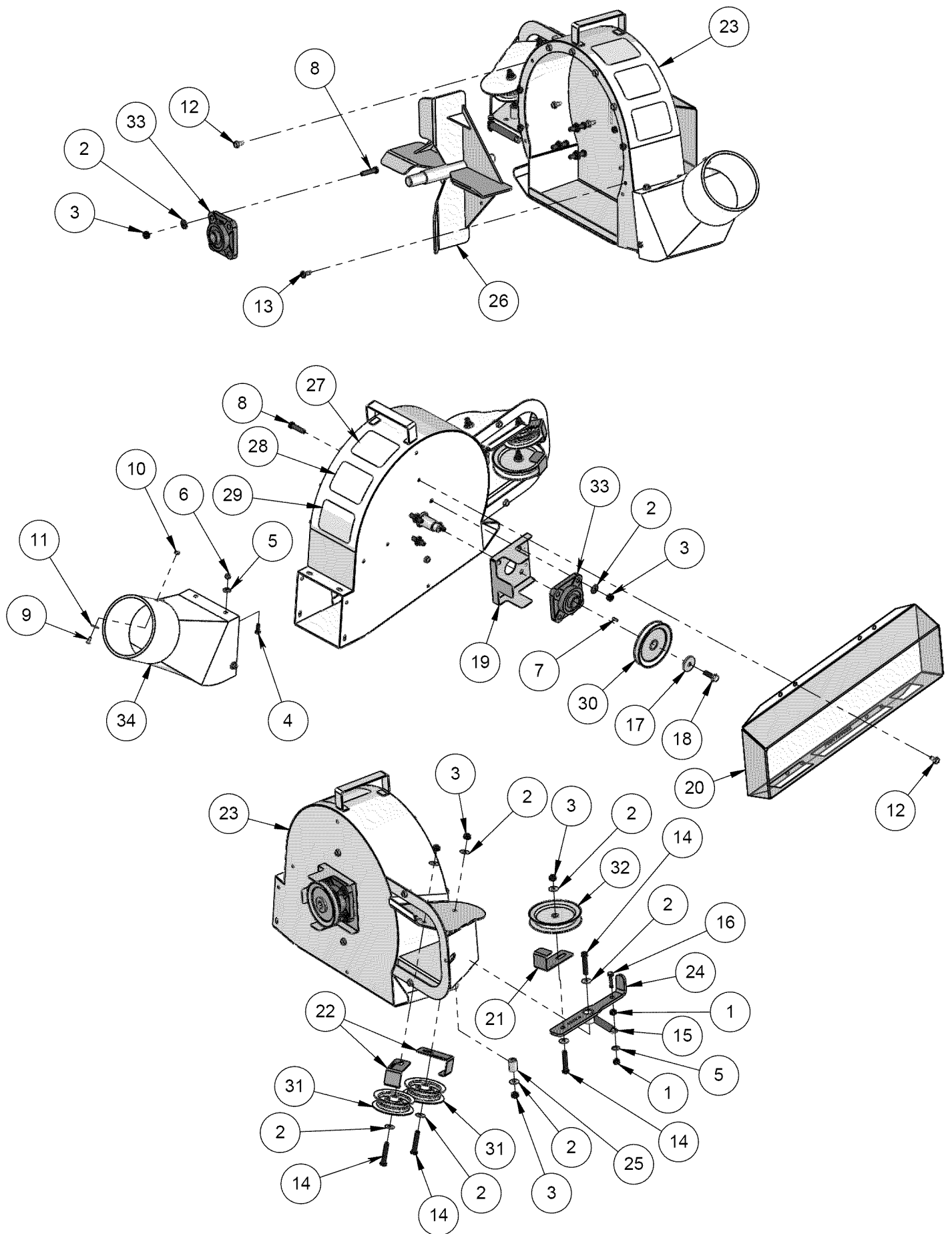
BLOWER MAINTENANCE INSTRUCTIONS

Grease bearings every eighty (80) hours of operation.

Section 5

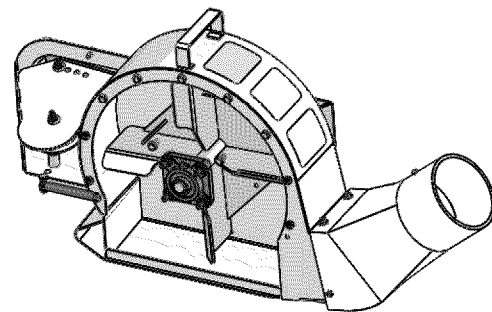
42", 48" & 52" Decks-Blower Assembly Illustration.....	5-2
42", 48" & 52" Decks-Blower Assembly Parts List.....	5-3
42", 48" & 52" Decks-Blower Mount Assembly Illustration.....	5-4
42", 48" & 52" Decks-Blower Mount Assembly Parts List.....	5-5
42", 48" & 52" Decks-Blower Installation Instructions.....	5-5
42", 48" & 52" Decks-Blower Belt Routing.....	5-6
42", 48" & 52" Decks -Blower Maintenance Instructions.....	5-6
42", 48" & 52" Decks-Blower Idler Position Diagram.....	5-7

18" Blower Parts List



18" BLOWER PARTS LIST

SGC

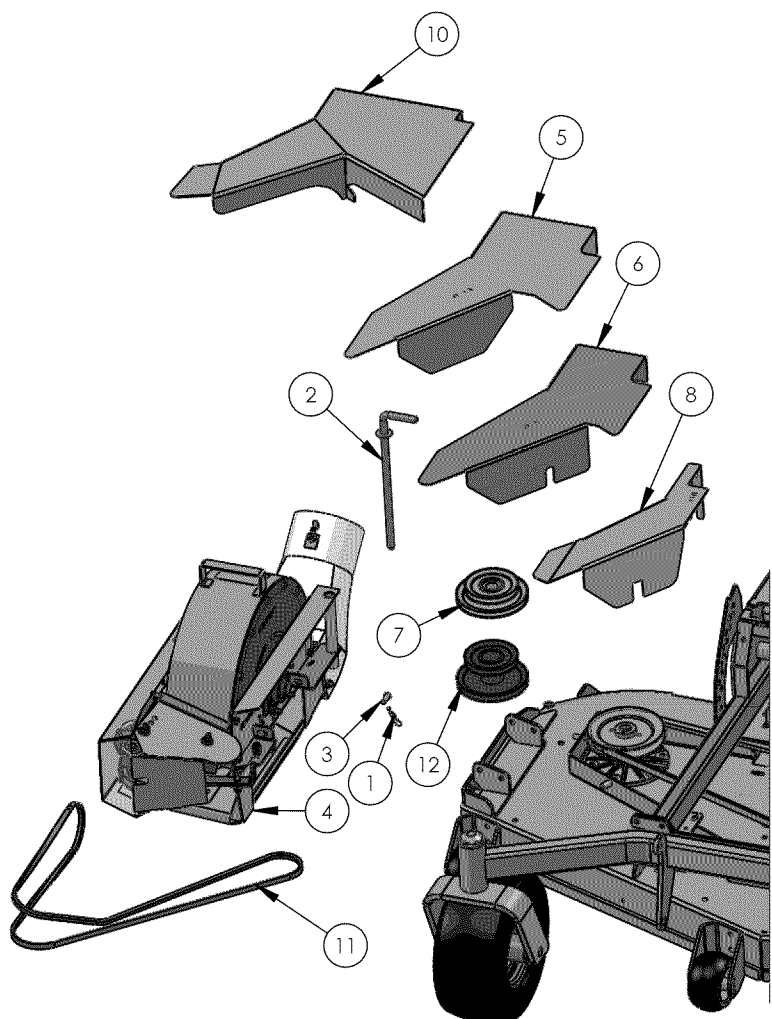


ITEM NO.	SGC PART#	DESCRIPTION	View 1/QTY.
1	64229-02	5/16-18 Nylon Insert Nut	2
2	64163-87	5/16" Flat Washer	16
3	64229-03	3/8-16 Nylon Insert Nut	12
4	64123-06	CAP SCREW 1/4-20 x .75	4
5	64163-55	1/4" USS WASHER	5
6	64229-01	1/4-20 Nylon Insert Nut	4
7	4137091	KEY 3/16 SQ x .50	1
8	64123-70	CAP SCREW 3/8-16 x 1.50	8
9	64152-06	#10 x 1/2" SCREW	1
10	64229-10	#10-24 Nylon Insert Nut	1
11	4139403	#10 FENDER WASHER	1
12	64197-024	5/16 x 5/8" SELF TAP SCREW	11
13	4139404	SELF-TAPPING SCREW 5/16 - .750	4
14	64123-67	CAP SCREW 3/8-16 x 2.00	4
15	4137089	BELT DRIVE TENSION SPRING	1
16	64123-47	CS 5/16-18 X 1 1/4 G5	1
17	4155011	FLAT WASHER, .39 ID x 1.5 OD x .188", YZ	1
18	4155012	CAP SCREW SERRATED FLANGE 3/8-16 x 1.25	1
19	4137448	DRIVEN BELT GUIDE	1
20	4137075	PULLEY / BELT COVER	1
21	4137447	Large Idler Belt Guide	1
22	4139395	BELT GUIDE (SMALL IDLER)	2
23	4137081	Vertical Blower Housing	1
24	4137088	IDLER W/A	1
25	4137446	IDLER BUSHING	1
26	4137082	18" BENT BLADE IMPELLER	1
27	4139398	THROWN OBJECT	1
28	4139399	ROTATING BLADES	1
29	4139400	TURN OFF MOWER	1
30	4137090	PULLEY, 4 1/2" A, 3/4" ID	1
31	4137087	IDLER PULLEY, 3" HIGH FLANGE, 3/8" ID	2
32	4137445	5" 'V' GROOVE IDLER	1
33	4137092	SQT PILLOWBLOCK BRG 1.0" I.D.	2
34	4137086	Transition Chute - Revised	1

42, 48", 52" & 61" FASTCAT

BLOWER MOUNT PULLEY & PULLEY COVER INSTALLATION

INSTALLATION INSTRUCTIONS



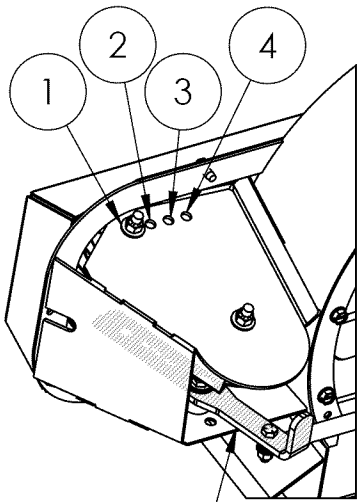
1. REMOVE FACTORY DEFLECTOR
2. REMOVE DISCHARGE SIDE PULLEY COVER. SAVE HARDWARE.
3. REMOVE DISCHARGE SIDE SPINDLE PULLY AS PER FACTORY RECOMMENDATIONS.
4. INSTALL THE SUPPLIED DOUBLE PULLEY (7) FOR THE 42/61, (12) FOR THE 48/52 WITH HARDWARE FROM STEP (3)
5. FOR 61" DECKS INSTALL DECK BAFFLE. (SEE BAFFLE INSTALLATION PAGE)
6. INSTALL TRANSITION BOOT ONTO BLOWER. (SEE TRANSITION BOOT INSTALLATION PAGE)
7. INSERT LARGE 'L' PIN (2) INTO BLOWER MOUNT AND RECIEVER TO REAR OF DISCHARGE OPENING
8. ROTATE BLOWER TO ALLIGN MOUNT HOLES TO HOLES IN DEFLECTOR FLANGES AND SECURE WITH CLEVIS PINS AND HAIR PINS.
9. FOR 61" DECKS THE BELT TENSIONER POSITION WILL NEED TO BE CHANGED. (SEE BELT ADJUSTMENT PAGE)
10. INSTALL THE BELT ONTO TOP PULLEY OF DECK PULLEY INSTALLED IN STEP (4).
11. INSTALL THE PULLEY COVER FOR YOUR SYSTEM USING THE HARDWARE SAVED IN STEP (2)

NOTE: shows blower mount for a 42" & 61" deck.
 For a 48" deck use ----- 4141837
 For a 52" deck use ----- 4137036

ITEM NO.	SGC PART#	DESCRIPTION	QTY.
1	4139402	HAIR PIN, 0.091 x 1.875	2
2	4137085	BLOWER MOUNT PIN	1
3	4139405	CLEVIS PIN .375 X .75	2
4	4137084	18" Blower Mount 42/61	1
5	4155016	FastCat 52" Pulley/ Belt Cover	1
6	4155024	FastCat 48" Pulley/ Belt Cover	1
7	4155027	Double Pulley 42" FastCat	1
8	4155025	FASTCAT 42" PULLEY COVER	1
9	4137083	BLOWER COVER PLATE	1
10	4167341.7	PULLEY COVER, 61" FASTCAT	1
11	4137076	BELT, AMAMID CORD 97"	1
12	4137077	Double Pulley 6 X 4.5	1

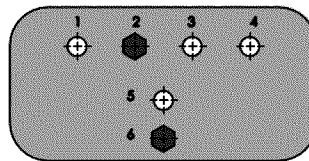
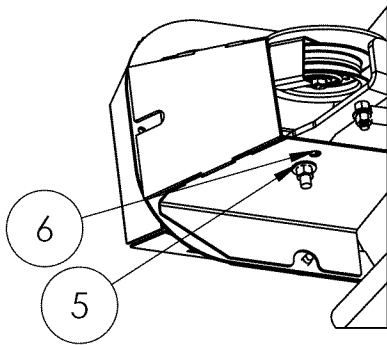
FOR 61" FASTCAT DECKS

IT IS NECESSARY TO CHANGE THE TENSIONER SETTING FROM THE FACTORY SETTING PRIOR TO USE

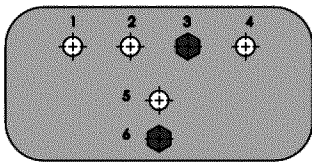


IDLER ARM

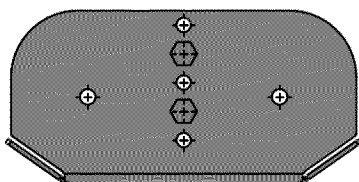
1. REMOVE THE BLOWER PULLEY COVER
2. REMOVE THE BOLT FROM THE IDLER PULLEY AND RE-INSTALL IDLER INTO POSITION (2)
3. MAKE SURE THE BELT GUIDE DOES NOT PINCH THE BELT
4. RE-INSTALL THE BLOWER PULLEY COVER



HOLE POSITION
2 AND 6



HOLE POSITION
3 AND 6



BELT POSITION "B"

FOR THE 36", 42", 48" & 52" FASTCAT UNITS THE BLOWER IS SET TO THE EXPECTED TENSION AT TIME OF ASSEMBLY. NO ADJUSTMENTS SHOULD BE NECESSARY FOR INSTALLATION OR USE.

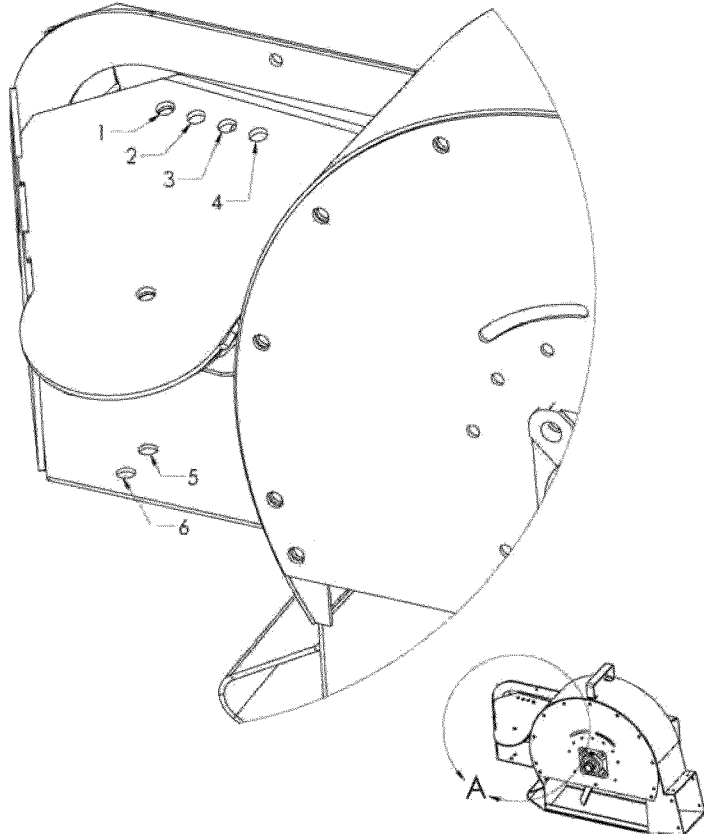
42", 48" & 52" Decks-BLOWER IDLER POSITION

TOP IDLER INSTALLATION POSITION

42" Deck Position 3

48" Deck Position 2

52" Deck Position 3



BOTTOM IDLER INSTALLATION POSITION

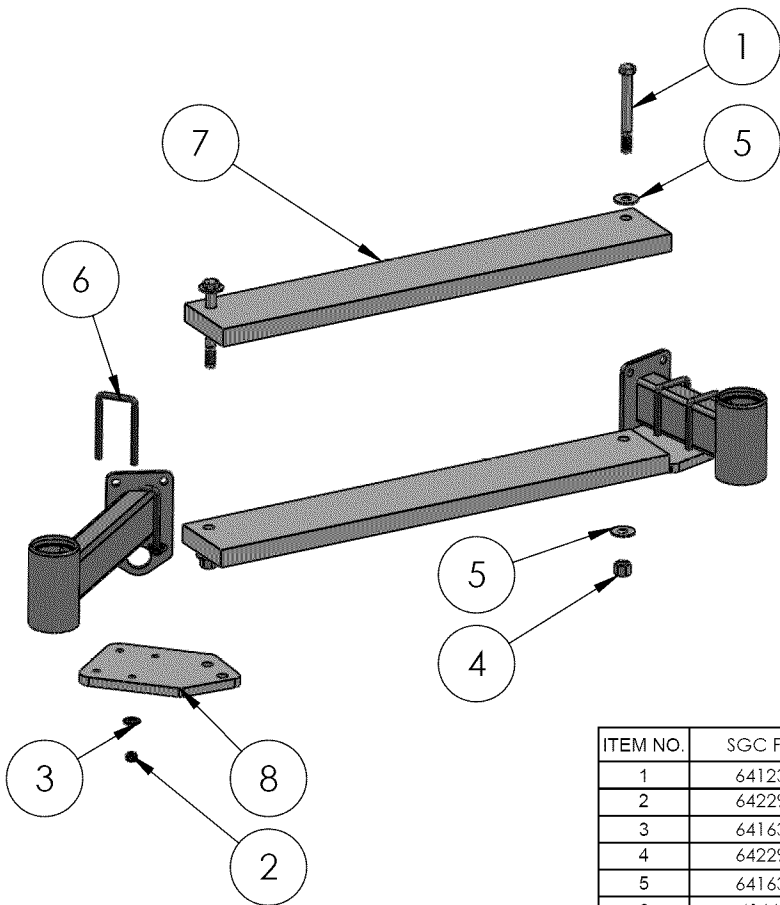
42" Deck Position 5

48" Deck Position 6

52" Deck Position 6

WEIGHT AND BAFFLE INSTALLATION

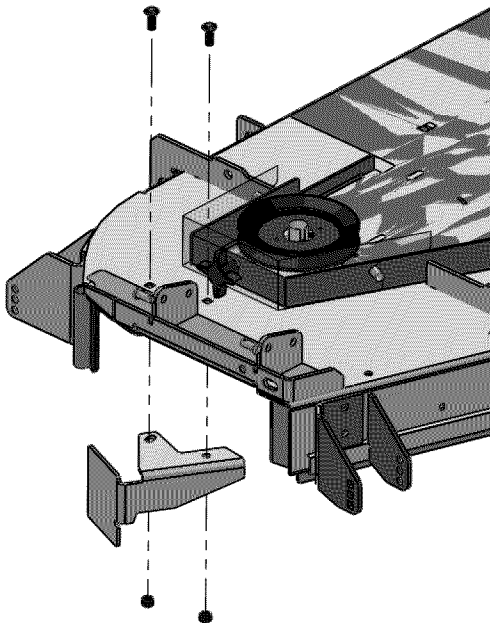
61" FASTCAT ONLY



WEIGHT INSTALLATION FOR 61" FASTCAT

- Orient the weight bracket , as shown, to the right side of the caster weldment
- Use (2) 5/16 "U" bolts (6) and hardware to secure weight bracket to the frame on both sides **DO NOT FULLY TIGHTEN**
- Orient weight bracket (8) as shown to left side of caster weldment
- Align the holes in the 30# weights (7) to the rear holes of the weight brackets
- Using (2) 1/2" BOLTS (1) and hardware, secure both sides of the weights to the brackets
- Align the weights to be parallel to the front of the mower and tighten all hardware fully

ITEM NO.	SGC Part#	DESCRIPTION	61 FASTCAT/QTY.
1	64123-74	CAP SCREW, 1/2-13 x 4 1/2"	2
2	64229-02	5/16-18 Nylon Insert Nut	8
3	64163-87	5/16" Flat Washer	8
4	64229-05	1/2-13 Nylon Insert Nut	2
5	64163-19	1/2" Flat Washer	4
6	4166635	5/16 X 3.5" U-BOLT	4
7	4166849	30# Ctr Wt IS	2
8	4164305	Bobcat 200 Series 61" Rt Ctr Wt Brkt	2



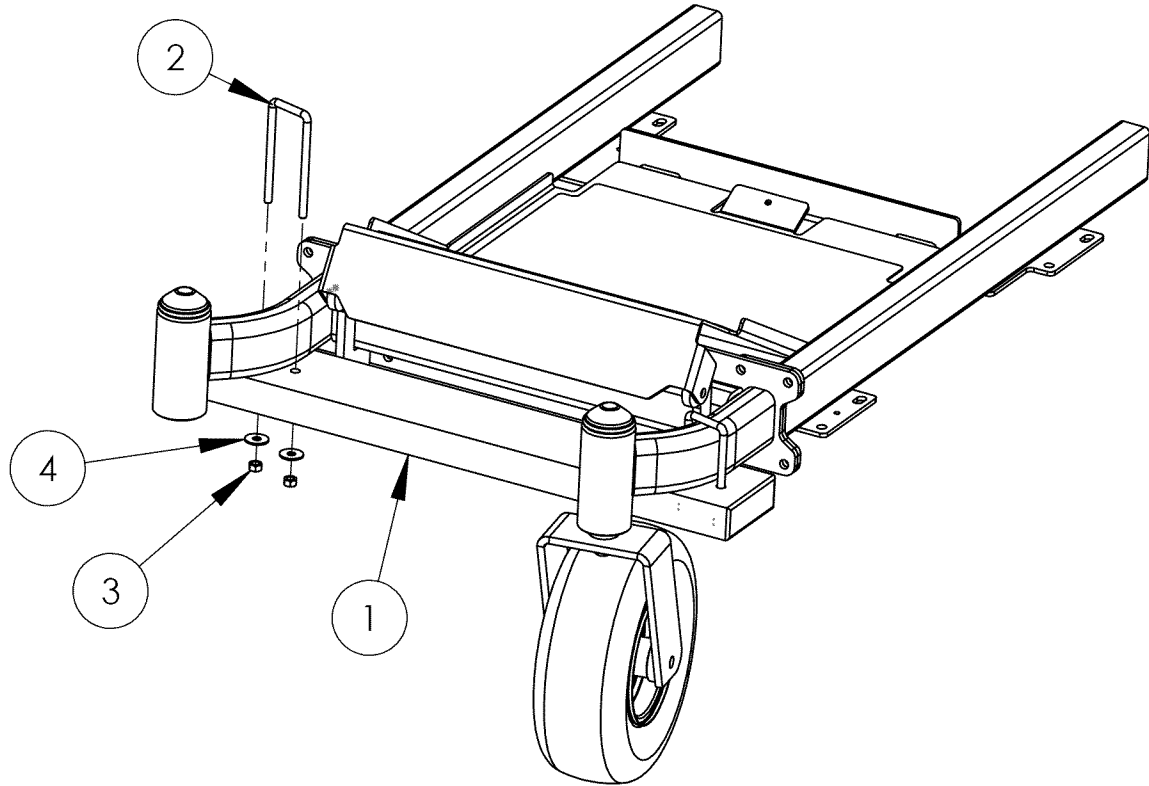
- Remove existing Discharge Chute
- Position Deck Baffle as shown.
- Install existing Carriage Bolt thru deck and Deck Bracket .
- Secure with Existing Locknut .

Section 6

Weight Installation for 36" & 42" Decks E Series.....	6-2
Weight Installation for 36" & 42" Decks.....	6-3
Weight Installation for 36" & 42" Decks Parts List	6-4
Weight Installation for 48" & 52" Decks.....	6-5
Weight Installation for 48" & 52" Decks Parts List.....	6-6
Weight Illustration for 48" & 52" Decks Parts List.....	6-7
Weight Illustration for 36" & 42" Decks Parts List.....	6-8

Fastcat Counter Weight Installation

E-Series 36" and 42" Decks



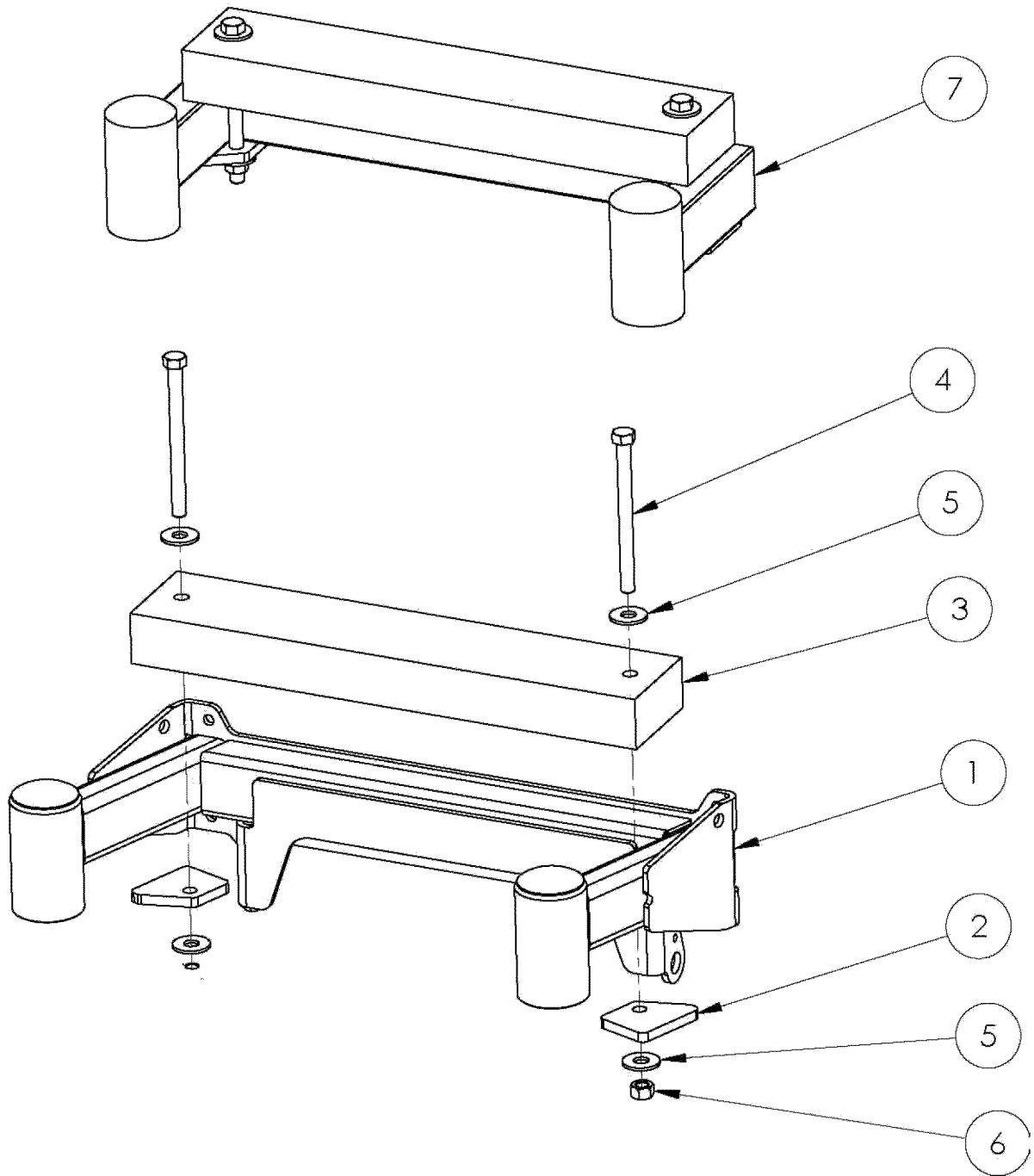
ITEM NO.	VendorNo	Description	QTY.
1	4164434	Fastcat E Series 47# Wt 36-42	1
2	4146433	4.5" U-BOLT	2
3	64229-02	5/16-18 Nylon Insert Nut	4
4	64163-55	5/16" LG OD Flat Washer	4

Installation Instructions:

1. Place U-Bolts over frame as shown
2. Orient weight with hole pattern closest to the end of the weight to the left side of mower
3. Position the weight under the front forks as shown
4. Insert the U-Bolts through the corresponding holes and secure loosely with flat washers and lock nuts
5. Adjust the weight to be parallel with the front of the mower and sufficient clearance for the floor pan to rotate to the open position
6. Tighten hardware at this time

36" & 42" Decks-Weight Installation Parts List

Illustrations show both Straight and Skewed Tractor Front Spindle Assembly.



36" & 42" Decks-Weight Installation Parts List

Illustrations show both Straight and Skewed Tractor Front Spindle Assembly. The Weight Installation is the same whether your tractor has the Straight Style Tractor Front Spindle Assembly (7) or the Skewed Style Tractor Front Spindle Assembly (1).

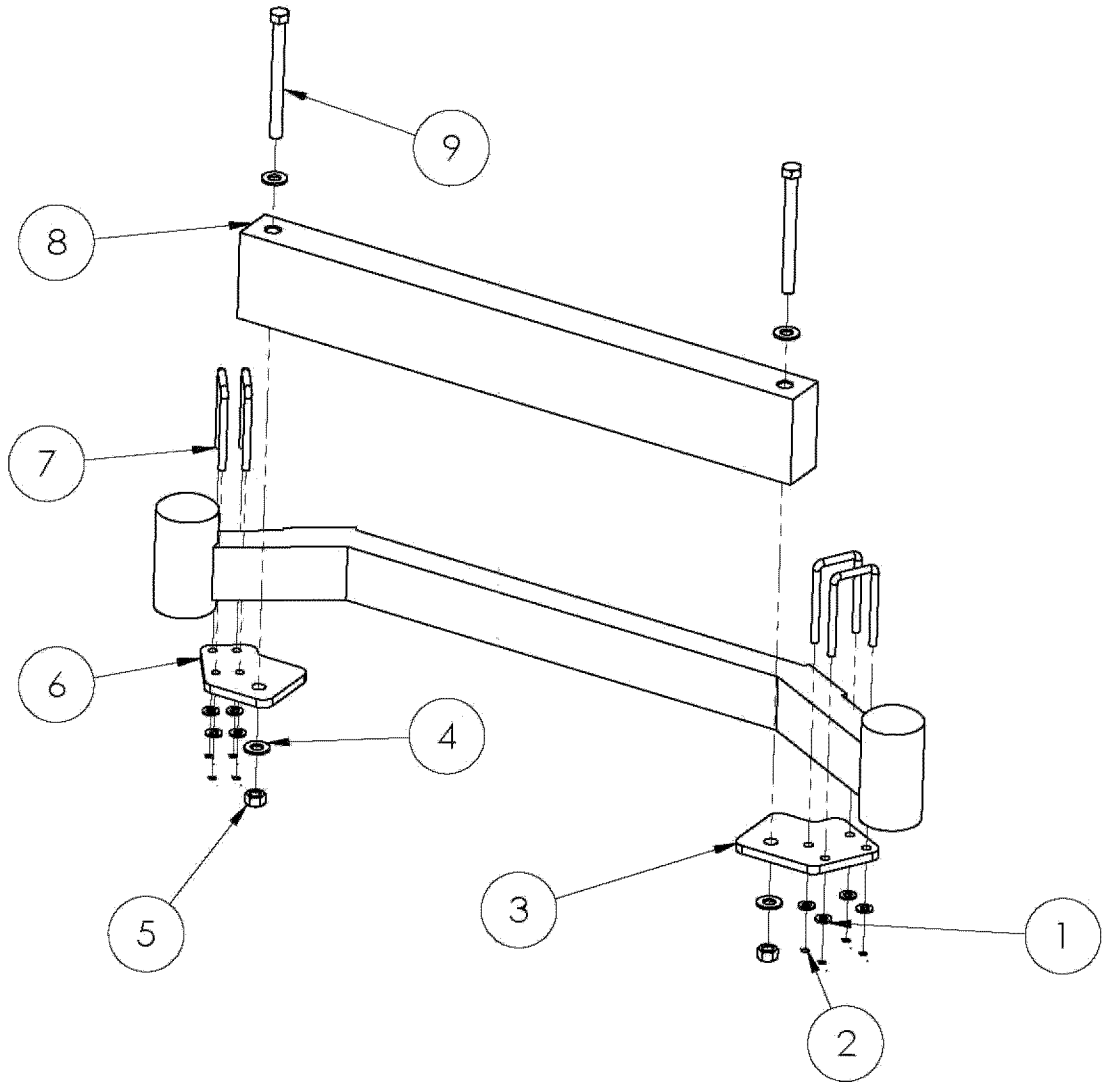
Index

No.	Part No.	Qt	y	Description
1	YOUR TRACTOR-(SEE ABOVE COMMENT)		1	SKewed STYLE TRACTOR FRONT SPINDLE ASSEMBLY
2	4159340		2	CLAMP BLOCK
3	4156660		1	45.5 # COUNTER WEIGHT
4	4147576		2	CAP SCREW, YZ, 1/2"-13 X 5 1/2" LONG
5	64163-79		4	FLAT WASHER, YZ, 1/2"
6	64229-05		8	HEX NUT, NYLON INSERT, YZ, 1/2"-13
7	YOUR TRACTOR-(SEE ABOVE COMMENT)		1	STRAIGHT STYLE TRACTOR FRONT SPINDLE ASSEMBLY

36" & 42" Decks-Weight Installation Instructions For Either Straight or Skewed Style Tractor Front Spindle Assembly

1. Identify 45.5 # weight **(3)** and Clamp Block **(2)**.
2. Identify 1/2"-13 x 5.5" long Bolts **(4)**, 1/2" Flat Washers **(5)** and 1/2" Nylon Insert Nuts **(6)**.
3. Place weight onto front tubes of tractor front spindle assembly.
4. Slide weight towards the rear as far a possible.
5. Insert 1/2-13 x 5.5" long Bolt **(4)** through 1/2" Flat Washer **(5)** and into hole of weight.
6. Repeat for remaining hole in weight.
7. Place Clamp Block **(2)** onto 1/2'-13 x 5.5" long Bolt **(4)** as shown.
8. Install 1/2" Flat Washers **(5)** and 1/2" Nylon Insert Nuts **(6)**.
9. Orient Clamp Blocks **(2)** as shown. (Part # should be on bottom)
10. Tighten all hardware securely.

48" and 52" Decks-Weight Installation



48" & 52" Decks-Weight Installation Parts List

Index

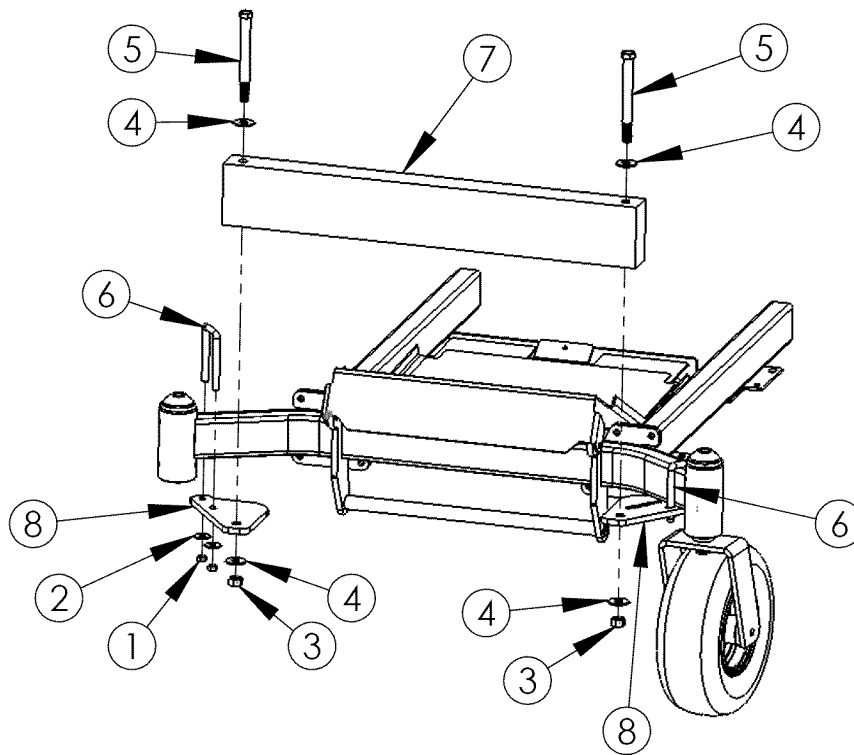
No.	Part No.	Qty	Description
1	64163-87	8	5/16 FLAT WASHER, YZ
2	64229-02	8	HEX NUT, NYLON INSERT, YZ, 5/16-18
3	4155021	1	LEFT WEIGHT MOUNT PLATE
4	64163-79	4	FLAT WASHER, YZ, 1/2"
5	64229-05	2	HEX NUT, NYLON INSERT, YZ, 1/2"-13
6	4155020	1	RIGHT WEIGHT MOUNT PLATE
7	4155022	4	U-BOLT, 5/16-18 x 3 1/2"
8	4146980	1	BAR, WEIGHT, 60lbs
9	4147576	2	CAP SCREW, YZ, 1/2"-13 X 5 1/2" LONG

48" & 52" Decks-Weight Installation Instructions

1. Identify Left Weight Mount Plate **(3)** and Right Weight Mount Plate **(6)**.
2. Install two U-Bolts over left caster spindle bar.
3. Install Left Weight Mount Plate **(3)** onto U-Bolts **(7)** with 5/16 Flat Washer **(1)** and 5/16-18 Hex Nut **(5)**
4. Secure U-Bolts loosely, to be adjusted and tightened later.
5. Install two U-Bolts **(7)** over right caster spindle bar.
6. Install Right Weight Mount Plate **(6)** onto U-Bolts **(7)** with 5/16 Flat Washer **(1)** and 5/16-18 Hex Nut **(5)**
7. Secure U-Bolts **(7)** loosely, to be adjusted and tightened later.
8. Place Bar Weight **(8)** onto Left Weight Mount Plate **(3)** and Right Weight Mount Plate **(6)**.
9. Insert Cap Screw **(9)** thru 1/2" Flat Washer **(4)**, into Bar Weight **(8)** and thru hole in Weight Mount Plates (3) and (6) each side.
10. Secure with 1/2" Flat Washer **(4)** and 1/2-13 Hex Nut **(5)**
11. Adjust Right and Left Weight Mount Plates **(3)** and **(6)** and Bar Weight **(8)** to parallel and centered.
12. Tighten all hardware at this time.

Fastcat Counter Weight Installation

E-series 48" and 52" Decks



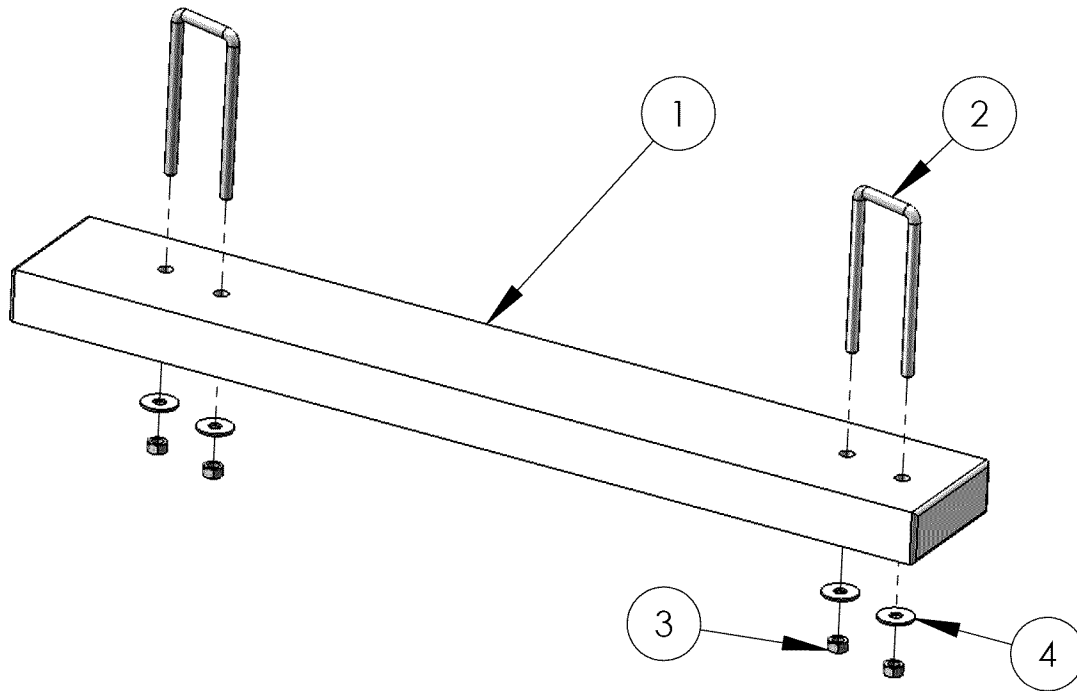
ITEM NO.	PART NUMBER	DESCRIPTION	QTY.
1	64229-02	5/16-18 Nylon Insert Nut	4
2	64163-87	5/16" LG OD Flat Washer	4
3	64229-05	1/2-13 Nylon Insert Nut	2
4	64163-79	1/2" Flat Washer	4
5	4147576	1/2-13 x 5 1/2" Bolt	2
6	4155022	3.5" U-BOLT	2
7	4146980	Generic 60# Ctr Wt	1
8	4164309	Fastcat Wt Bracket E Series 48-52	2

Installation Instructions

1. Place U-Bolts over frame as shown
2. Orient Weight Bracket under the front fork on the right side
3. Place the U-bolt through the corresponding holes
4. Secure loosely with 5/16" Washers and Nylon Lock Nuts
5. Repeat with the left side. The Weight Brackets will be installed in a mirror image
6. Secure loosely with 5/16" Washers and Nylon Lock Nuts
7. Place Counter Weight onto top side of Weight Brackets
8. Insert 1/2" x 5 1/2" Long Bolt with Washer thru weight and Bracket
9. Secure loosely with 1/2" Washer and 1/2" Nylon Lock Nut
10. Repeat for remaining end of weight
11. Align and center weight and brackets and tighten all hardware at this time.

Fastcat Weight Set

Fits 36" & 42" Mowers (E-Series)



This kit is used to update the 36" & 42" Fastcat systems to the E-Series. The kit consists of 1 weight and 1 parts bag. The Kit replaces existing weight and weight brackets, the hardware is in addition to existing hardware packet.

ITEM NO.	VendorNo	DESCRIPTION	QTY.
1	4164434	Fastcat E Series 47# Wt 36-42	1
2	4146433	4.5" U-BOLT	2
3	64229-02	5/16-18 Nylon Insert Nut	4
4	64163-55	5/16" LG OD Flat Washer	4