

Instruction Manual



3" X 21" BELT SANDER

Model 909.25722



⚠ WARNING:
Before using this product,
read this manual and follow
all its Safety Rules and
Operating Instructions.

- Safety
- Operation
- Maintenance
- Parts List
- Français

Sears Canada Inc., Toronto, M58-2B8

Form No. 488985-00

JUNE-05

Printed in China

SEARS WARRANTY

Full three year warranty on your Craftsman Tool

If this Craftsman tool fails due to a defect in material or workmanship within three years from the date of purchase Sears will repair it free of charge.

WARRANTY SERVICE IS AVAILABLE BY RETURNING THE TOOL TO THE PLACE OF PURCHASE OR NEAREST SEARS SERVICE CENTER.

This warranty gives you specific legal rights and you may have other rights which vary from state to state.

SEARS CANADA INC., TORONTO, M5B 2B8

GENERAL SAFETY RULES

⚠ WARNING! Read and understand all instructions. Failure to follow all instructions listed below may result in electric shock, fire and/or serious personal injury.

SAVE THESE INSTRUCTIONS

Work Area

- **Keep your work area clean and well lit.** Cluttered benches and dark areas invite accidents.
- **Do not operate power tools in explosive atmospheres, such as in the presence of flammable liquids, gases, or dust.** Power tools create sparks which may ignite the dust or fumes. Use in well ventilated areas only.
- **Keep bystanders, children, and visitors away while operating a power tool.** Distractions can cause you to lose control.

Electrical Safety

- **Double insulated tools are equipped with a polarized plug (one blade is wider than the other.) This plug will fit in a polarized outlet only one way. If the plug does not fit fully in the outlet, reverse the plug. If it still does not fit, contact a qualified electrician to install a polarized outlet. Do not change the plug in any way.** Double Insulation eliminates the need for the three wire grounded power cord and grounded power supply system.
- **Avoid body contact with grounded surfaces such as pipes, radiators, ranges and refrigerators.** There is an increased risk of electric shock if your body is grounded.
- **Don't expose power tools to rain or wet conditions.** Water entering a power tool will increase the risk of electric shock.

- **Do not abuse the cord. Never use the cord to carry the tools or pull the plug from an outlet. Keep cord away from heat, oil, sharp edges or moving parts. Replace damaged cords immediately.** Damaged cords increase the risk of electric shock.
- **When operating a power tool outside, use an outdoor extension cord marked "W-A" or "W."** These cords are rated for outdoor use and reduce the risk of electric shock.

Personal Safety

- **Stay alert, watch what you are doing and use common sense when operating a power tool. Do not use tool while tired or under the influence of drugs, alcohol, or medication.** A moment of inattention while operating power tools may result in serious personal injury.
- **Dress properly. Do not wear loose clothing or jewelry. Contain long hair. Keep your hair, clothing, and gloves away from moving parts.** Loose clothes, jewelry, or long hair can be caught in moving parts. Air vents cover moving parts and should be avoided.
- **Avoid accidental starting. Be sure switch is off before plugging in.** Carrying tools with your finger on the switch or plugging in tools that have the switch on invites accidents.
- **Remove adjusting keys or wrenches before turning the tool on.** A wrench or a key that is left attached to a rotating part of the tool may result in personal injury.
- **Do not overreach. Keep proper footing and balance at all times.** Proper footing

and balance enables better control of the tool in unexpected situations.

- **Use safety equipment. Always wear eye protection.** Dust mask, non-skid safety shoes, hard hat, or hearing protection must be used for appropriate conditions.

Tool Use and Care

- **Use clamps or other practical way to secure and support the workpiece to a stable platform.** Holding the work by hand or against your body is unstable and may lead to loss of control.
- **Do not force tool. Use the correct tool for your application.** The correct tool will do the job better and safer at the rate for which it is designed.
- **Do not use tool if switch does not turn it on or off.** Any tool that cannot be controlled with the switch is dangerous and must be repaired.
- **Disconnect the plug from the power source before making any adjustments, changing accessories, or storing the tool.** Such preventive safety measures reduce the risk of starting the tool accidentally.
- **Store idle tools out of reach of children and other untrained persons.** Tools are dangerous in the hands of untrained users.
- **Maintain tools with care. Keep cutting tools sharp and clean.** Properly maintained tools, with sharp cutting edges are less likely to bind and are easier to control.
- **Check for misalignment or binding of moving parts, breakage of parts, and any other condition that may affect the tools operation. If damaged, have the tool serviced before using.** Many accidents are caused by poorly maintained tools.
- **Use only accessories that are recommended by the manufacturer for your model.** Accessories that may be suitable for one tool, may become hazardous when used on another tool.
- **Use only accessories recommended for this tool that are sold by Sears or a Craftsman outlet.** Use of any accessories purchased elsewhere may be hazardous, and will also void your warranty.

Service

- **Tool service must be performed only by qualified repair personnel.** Service or maintenance performed by unqualified personnel could result in a risk of injury.
- **When servicing a tool, use only identical replacement parts. Follow instructions in the Maintenance section of this manual.** Use of unauthorized parts or failure to follow Maintenance Instructions may create a risk of electric shock or injury.

Specific Safety Rules

⚠ WARNING: Some dust created by power sanding, sawing, grinding, drilling, and other construction activities contains chemicals known to cause cancer, birth defects or other reproductive harm. Some examples of these chemicals are:

- lead from lead-based paints,
 - crystalline silica from bricks and cement and other masonry products, and
 - arsenic and chromium from chemically-treated lumber. (CCA)
- Your risk from these exposures varies, depending on how often you do this type of work. To reduce your exposure to these chemicals: work in a well ventilated area, and work with approved safety equipment, such as those dust masks that are specially designed to filter out microscopic particles.
- **Avoid prolonged contact with dust from power sanding, sawing, grinding, drilling, and other construction activities. Wear protective clothing and wash exposed areas with soap and water.** Allowing dust to get into your mouth, eyes, or lay on the skin may promote absorption of harmful chemicals.

⚠ WARNING: Use of this tool can generate and/or disburse dust, which may cause serious and permanent respiratory or other injury. Always use NIOSH/OSHA approved respiratory protection appropriate for the dust exposure. Direct particles away from face and body.

⚠ CAUTION: Wear appropriate hearing protection during use. Under some conditions and duration of use, noise from this product may contribute to hearing loss.

- The label on your tool may include the following symbols.
V.....volts
A.....amperes
Hz.....hertz
Wwatts
minminutes
~alternating current
====direct current
nono load speed
☐Class II Construction
.../min.....revolutions or reciprocation per minute
⊕earthing terminal
⚠safety alert symbol

⚠ Safety Warnings and Instructions: Sanders

- **ALWAYS WEAR EYE and respiratory PROTECTION.**
- Clean your tool out periodically.

⚠ Other Important Safety Warnings and Instructions

Sanding Lead Base Paint

Sanding of lead based paint is NOT RECOMMENDED due to the difficulty of controlling the contaminated dust. The greatest danger of lead poisoning is to children and pregnant women.

Since it is difficult to identify whether or not a paint contains lead without a chemical analysis, we recommend the following precautions when sanding any paint:

Personal Safety

- No children or pregnant women should enter the work area where the paint sanding is being done until all clean up is completed.
- A dust mask or respirator should be worn by all persons entering the work area. The filter should be replaced daily or whenever the wearer has difficulty breathing.
NOTE: Only those dust masks suitable for working with lead paint dust and fumes should be used. Ordinary painting masks do not offer this protection. See your hardware dealer for the proper (NIOSH approved) mask.
- **NO EATING, DRINKING or SMOKING** should be done in the work area to

prevent ingesting contaminated paint particles. Workers should wash and clean up BEFORE eating, drinking or smoking. Articles of food, drink, or smoking should not be left in the work area where dust would settle on them.

Environmental Safety

- Paint should be removed in such a manner as to minimize the amount of dust generated.
- Areas where paint removal is occurring should be sealed with plastic sheeting of 4 mils thickness.
- Sanding should be done in a manner to reduce tracking of paint dust outside the work area.

Cleaning And Disposal

- All surfaces in the work area should be vacuumed and thoroughly cleaned daily for the duration of the sanding project. Vacuum filter bags should be changed frequently.
- Plastic drop cloths should be gathered up and disposed of along with any dust chips or other removal debris. They should be placed in sealed refuse receptacles and disposed of through regular trash pick-up procedures. During clean up, children and pregnant women should be kept away from the immediate work area.
- All toys, washable furniture and utensils used by children should be washed thoroughly before being used again.

Motor

Be sure your power supply agrees with nameplate marking. 120 Volts AC only means your tool will operate on standard 60 Hz household power. Do not operate AC tools on DC. A rating of 120 volts AC/DC means that your tool will operate on standard 60 Hz AC or DC power. This information is printed on the nameplate. Lower voltage will cause loss of power and can result in over-heating. All Craftsman tools are factory-tested; if this tool does not operate, check the power supply.

Extension Cords

Make sure the extension cord is in good condition before using. Always use the proper size extension cord with the tool – that is, proper wire size for various lengths of cord and heavy enough to carry the current the tool will draw. Use of an undersized cord will cause a drop in line voltage resulting in loss of power and overheating. For proper size cords see chart below.

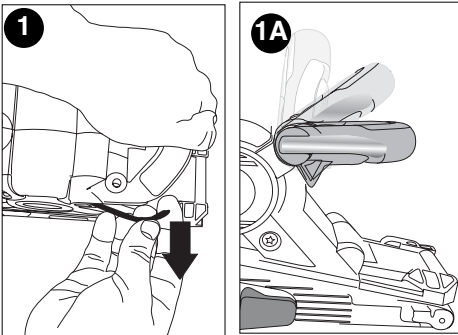
Minimum Gage for Extension Cords (AWG)				
120 VAC Tools				
Total Cord Length	0-25	26-50	51-100	105-150
Amp Rating	AWG	AWG	AWG	AWG
More than 0	18	16	16	14
Not More than 6				
More than 6	18	16	14	12
Not More than 10				
More than 10	16	16	14	12
Not more than 12				
More than 12	14	12	Not Recommended	
Not more than 16				

ADJUSTMENTS

⚠ WARNING: To prevent accidental operation, turn off and unplug sander before performing the following operations. Failure to do this could result in serious personal injury.

3 Position Handle - Figure 1 & 1A

A locking mechanism on the side of the handle can be loosened to allow the handle to move. To adjust the handle to move, pull out on the locking arm (**Figure 1**) and move the handle to the desired position (**Figure 1A**). Once the handle is in position, push the locking arm in to lock the handle into position.



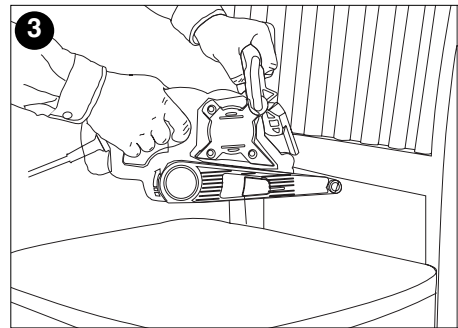
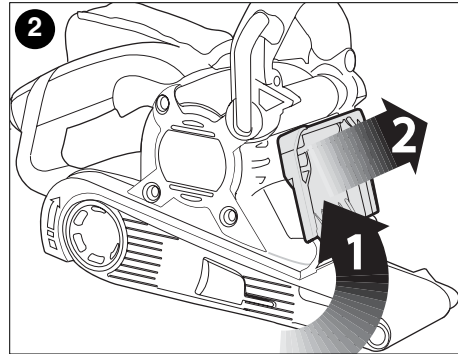
2 Position Belt Cover - Figure 2 & 3

The belt sander has an aluminum sanding belt cover at the front. When the handle is

in the uppermost position, this cover can be raised as shown in **Figure 2**

(**Arrow 1**) and locked in place to:

- Improve accessibility to narrow areas.
- Allow the use of the smaller diameter front roller for sanding (normally the aluminum cover prevents this when in the “down” position).
- Expose the top part of the belt for more versatile sanding (**Figure 3**).



To lower the belt cover, grasp the flange on the side and move it slightly in the direction shown in **Figure 2** (**Arrow 2**) and return it to its closed position.

Note: The sanding belt cover cannot be locked in its raised position unless the handle is in the uppermost position.

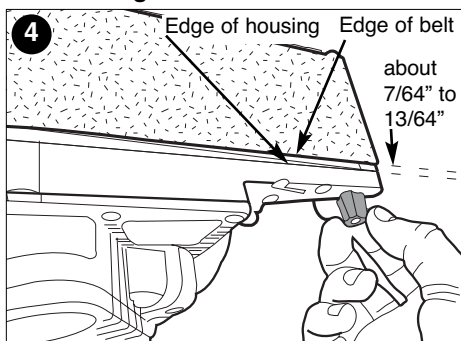
⚠ WARNING: The sanding belt is exposed when the belt cover is raised. Use extra caution when operating in this mode.

Adjusting The Sanding Belt Tracking - Figure 4

Turn the machine upside down (**Figure 4**), hold it firmly with one hand, start motor and release switch immediately after observing tracking of sanding belt. If the

sanding belt runs outward, turn the tracking adjustment knob clockwise to correct. If belt runs inward turn adjustment knob counterclockwise.

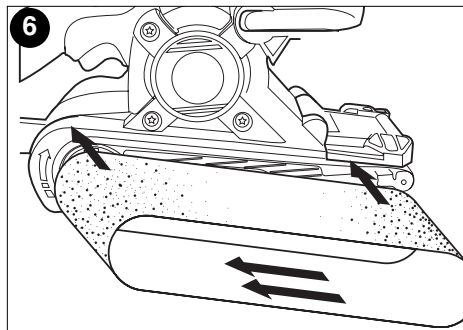
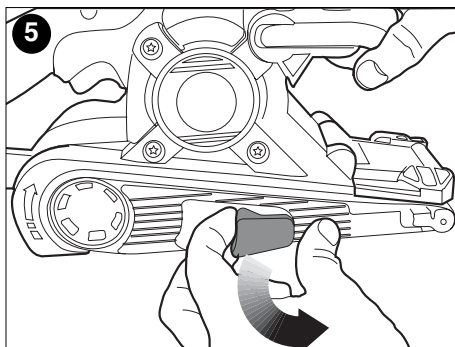
Belt life will be greatly increased by keeping the tracking adjustment set properly. To prevent the sanding belt from rubbing against the sander housing, keep the edge of the belt about $7/64"$ (2.7mm) to $13/64"$ (5.1mm) from the housing as shown in **figure 4**.



Changing The Sanding Belt - Figure 5 & 6

⚠ WARNING: To prevent accidental operation, turn off and unplug sander before changing the sanding belt.

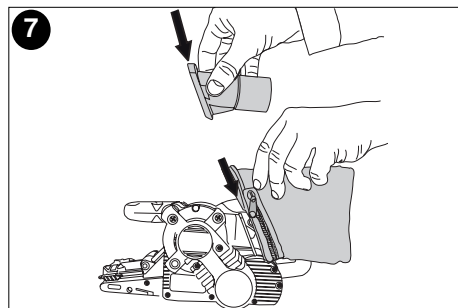
Pull the lever shown in **Figure 5** to release the tension on the sanding belt. Pull the sanding belt from the two rollers. Put the new 3" x 21" (76 x 533mm) sanding belt in position on the front and rear rollers (**Figure 6**). Ensure that the arrows on the sanding belt and on your belt sander are pointing in the same direction. Push the lever to the rear to tension the sanding belt.



Dust Collection - Figure 7

⚠ WARNING: To prevent accidental operation, turn off and unplug sander before installing the dust bag.

When using your belt sander, dust and grit are produced. It is important to use the provided dust bag to collect dust. You may also connect the sander to a vacuum cleaner using the provided vacuum adaptor. Slide the plastic opening of the bag or adaptor down over the dust exhaust port of the sander as shown in **Figure 7**. To empty the dust bag, remove it from the sander and unzip the bag over a trash container.



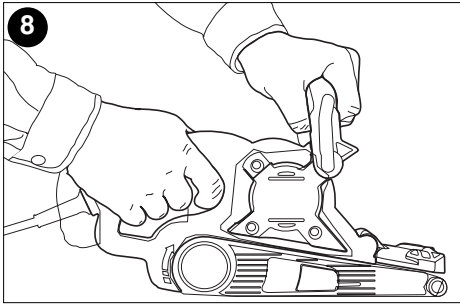
⚠ WARNING: Fire hazard. Collected sanding dust from sanding surface coatings (polyurethane, linseed oil, etc.) can self-ignite in sander dust bag or elsewhere and cause fire. To reduce risk, empty bag frequently and strictly follow sander manual and coating manufacturer's instructions.

⚠ WARNING: Fire hazard. When working on metal surfaces, do not use the dust bag or a vacuum cleaner because sparks are generated. Wear safety glasses and a dust mask. Due to the danger of fire, do not use your belt sander to sand magnesium surfaces. Do not use for wet sanding.

OPERATION

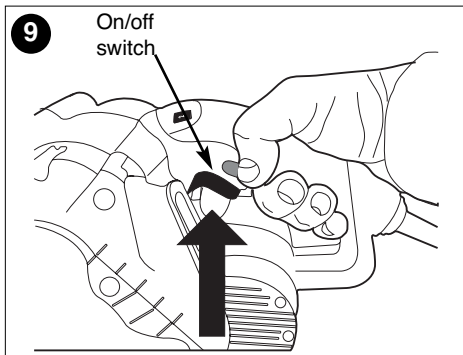
Operating Position- Figure 8

Always hold belt sander firmly with both hands while sanding as shown in Figure 8.

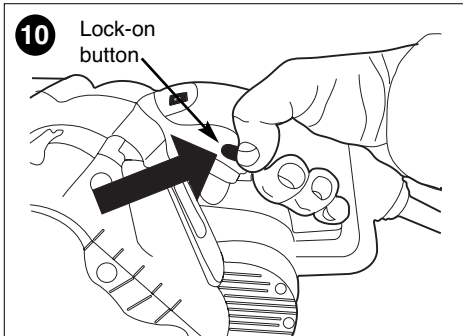


Starting and Stopping - Figures 9, 10

To start your belt sander, depress the on/off switch as shown in Figure 9. To stop belt sander release the on/off switch.

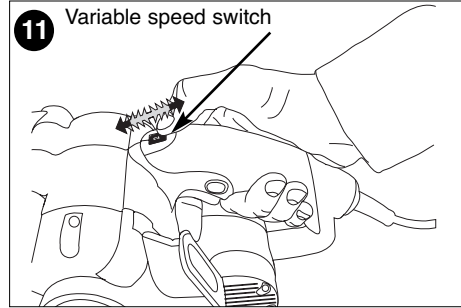


For continuous operation, depress the on/off switch then depress the lock-on button (Figure 10) and release the on/off switch. To stop belt sander, depress the on/off switch to release the lock-on button. Release the on/off switch.



Variable Speed Switch - Figure 11

The variable speed feature of your belt sander allows you to increase or decrease the speed of the belt by turning the speed wheel as shown in Figure 11.



Operation Requirements

- Always start your belt sander before it is in contact with the workpiece and do not switch it off until after it has been lifted from the workpiece.
- Always hold your belt sander with two hands.
- Where possible, clamp the workpiece to a work bench or similar sturdy surface.
- Use the correct grit sanding belt for your application. The following is a suggested list of belt grits to use with different materials.

MATERIAL	BELT GRIT
Solid Wood	80
Veneer	150
Chipboard	60/80
Plastics	100
Steel	80 (remove dust bag)
Paint Removal	40/60
Balsa Wood	100
Acrylic	100

Tool Maintenance and Care

Never apply excessive force when you use your belt sander. Too much force can result in an overload and cause damage to the motor or the workpiece. If your belt sander becomes too hot, operate it without load for 2 minutes. Always keep the air cooling vents clear. To clean your belt sander, proceed as follows:

⚠ WARNING: To prevent accidental operation, turn off and unplug sander before performing the following operations. Failure to do this could result in serious personal injury.

- Use a clean dry paint brush to clear vents and ducts.
 - Clean the sander housing using a clean damp cloth (do not use solvents, gas or turpentine.)
- IMPORTANT:** To assure product SAFETY and RELIABILITY, repairs, maintenance and adjustments should be performed by Sears or other qualified service technicians, always using identical replacement parts.

Accessories

Use only 3" x 21" (76 x 533mm) sanding belts. Use only Craftsman accessories with your tool. These accessories are available at extra cost from your local Sears store or Sears Parts and Repair Center.

⚠ CAUTION: The use of any other accessory not recommended for use with this tool could be hazardous.

Get it fixed, at your home or ours!

Just Call:

1-800-4-MY-HOME®

(1-800-469-4663)

24 hours a day, 7 days a week

For the repair of major brand appliances **in your own home ...**
no matter who made it, no matter who sold it!

For your nearest **Sears Parts & Service** location,
to bring in products like vacuums, lawn equipment and electronics.

For **Sears Parts & Service**, to order the replacement parts,
accessories and owner's manuals that you need to do-it-yourself.

www.sears.ca

To purchase or inquire about a Sears Maintenance Agreement, call:

1-800-361-6665

9 a.m. – 8 p.m. Mon. – Fri. EST, 9 a.m. – 4 p.m. Sat.

Pour service en français:

1-800-LE-FOYER^{MC}

(1-800-533-6937)

www.sears.ca



®/TM Trademarks of Sears, Roebuck and Co. used under license by Sears Canada
MD Marque déposée/ ^{MC} Marque de commerce de Sears, Roebuck and Co. utilisée en vertu d'une licence de Sears Canada

