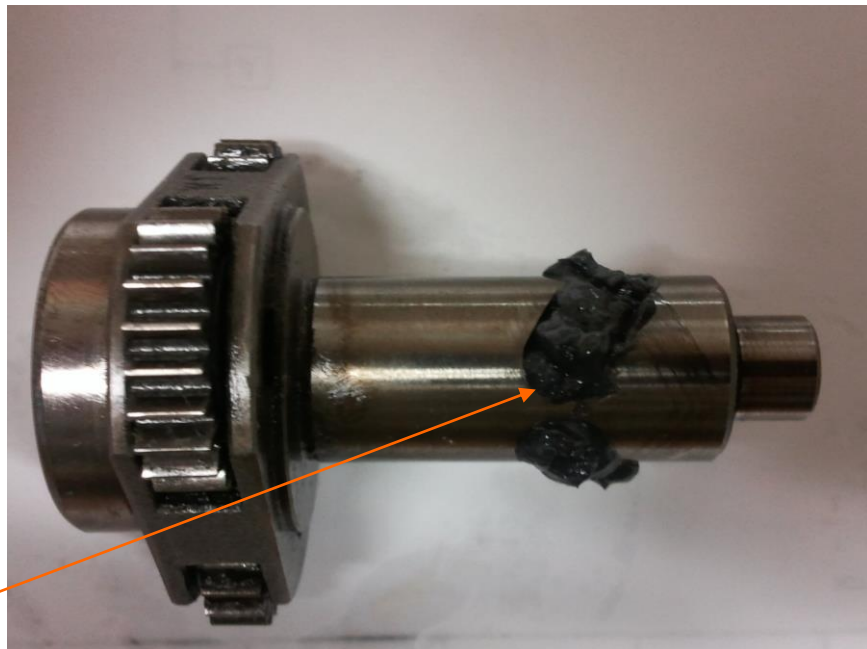


This Document Is The Property Of Black & Decker Inc. The Contents Of This Document Are Confidential And Constitute Trade Secrets Proprietary To Black & Decker, Inc. Neither This Document Nor Its Contents Shall Be Disclosed To Any Unauthorized Person, Copied Or Published Without Black & Decker, Inc.'s Prior Written Consent.

GRAPHICS SHOWN MAY REPRESENT VARIOUS MODS. SEE PRODUCT MANAGER B.O.M. FOR SPECIFIC COMPONENT USAGE.

NOTES:

1. DISTRIBUTE TOTAL OF 1.4 - 2.2 GRAMS OF MOLYKOTE G68 GREASE (34138513) IN LOCATIONS NOTED IN THIS DOCUMENT. (Pictures for reference only)
2. DISTRIBUTE TOTAL OF 1.7 – 2.5 NYE 380 GREASE (30301910) IN LOCATIONS NOTED IN THIS DOCUMENT (Pictures for reference only)
3. DISPENSE MOLYKOTE GREASE AND APPLY TO PARTS AS SHOWN IN PICTURES.
4. DISPENSE NYE GREASE AND APPLY TO PARTS AS SHOWN IN PICTURES.
5. CRITICAL - OILS, GREASES, WAXES ETC. USED AS PRESERVATIVES, LUBRICANTS OR FOR IMPREGNATION MUST BE APPROVED BY B&D DEV ENGR FOR COMPATIBILITY WITH PLASTIC MATERIAL PER ES100110.



SEE NOTE 4

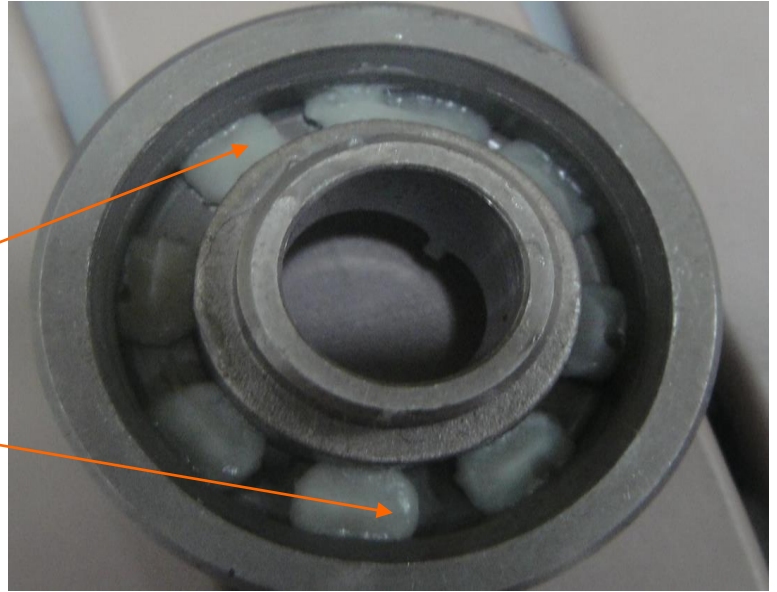
5/4/2018 Supersedes CN:
CN0090269
Date Released 1/31/2012

Title: GREASE PLACEMENT INFINITY IMPACT
Approved By: Bob Kusmierski

This Document Is The Property Of Black & Decker Inc. The Contents Of This Document Are Confidential And Constitute Trade Secrets Proprietary To Black & Decker, Inc. Neither This Document Nor Its Contents Shall Be Disclosed To Any Unauthorized Person, Copied Or Published Without Black & Decker, Inc.'s Prior Written Consent.

0.5-0.9 GRAMS

SEE NOTE 3
0.7-1.1 GRAMS



SEE NOTE 3
0.7-1.1 GRAMS



This Document Is The Property Of Black & Decker Inc. The Contents Of This Document Are Confidential And Constitute Trade Secrets Proprietary To Black & Decker, Inc. Neither This Document Nor Its Contents Shall Be Disclosed To Any Unauthorized Person, Copied Or Published Without Black & Decker, Inc.'s Prior Written Consent.

SEE NOTE 4
1.2-1.6 GRAMS

GREASE TO CONTACT
CENTER POST OF
CAM CARRIER

