

GAP100 PORTABILITY KIT

- STEPS FOR INSTALLING PORTABILITY KIT -

This portability kit includes the following parts:

Key No.	Part No.	Description
1	GS-0214	Wheel (2 used)
2	GS-0215-1	Axle
3	GS-0889	Axle spacer (2 used)
4	SSN-622	Cotter pin
5	GS-0217-1	Wheel bracket (2 used)
6	SSF-591	Axle end cap
7	SSN-623	Flat Washer, 3/4 OD x 11/16 ID
8	SS-12-CD	Screw, 5/16-18 x 3/4 (3 or 4 used)
9	SSF-8150	Lock nuts (7 or 8 used)
10	SSF-999-1	Screw, 5/16-18 x 1-3/4 (4 used)
11	GS-0221	Base end caps (2 used)
12	91890228	Flat Washer, 1-5/16 OD x 5/8 ID (2 used)
13	D21545	Handle assembly (2 used)
14	GS-0220	Handle grip (2 used)

ASSEMBLY

CAUTION: Drain gas and oil before assembling the portability kit. Failure to do so will cause damage to the engine.

NOTE: Always follow state regulations for proper oil disposal.

- Place generator on level ground; drain all gas and oil from the engine (see engine manual for correct procedure).
- Place a 1" thick x 1' square piece of wood on the ground in front of the engine. With the help of another person, tilt the generator and rest the recoil starter on the wood. See Figure 2. **NOTE:** This will support the gasoline engine during assembly and make assembly easier.

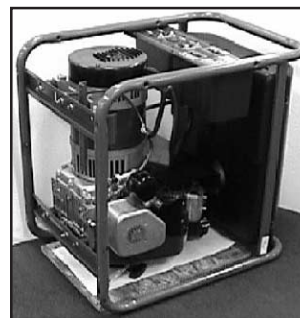


Figure 2

- Using two screws (8) and two lock nuts (9) install the wheel bracket (5) on the bottom right side of the engine support as shown in Figure 3.

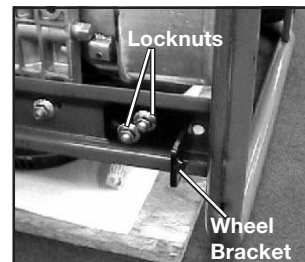


Figure 3

- Using two screws (8) and two lock nuts (9) install the wheel bracket (5) on the bottom left side of the engine support as shown in Figure 4.

NOTE: If the unit is equipped with an isolator on the bottom left engine support as shown in Figure 5, assemble as follows.

- Remove the locknut on the bottom of the isolator.
- Position wheel bracket onto the existing screw, lining up holes in bracket with holes in frame. Secure with the removed locknut.
- Place screw (8) into second hole and secure with locknut (9).

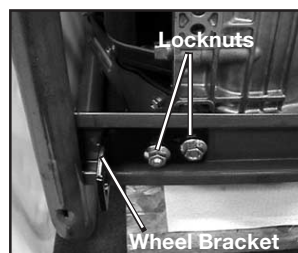


Figure 4

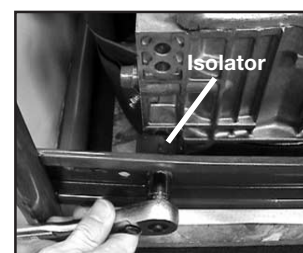


Figure 5

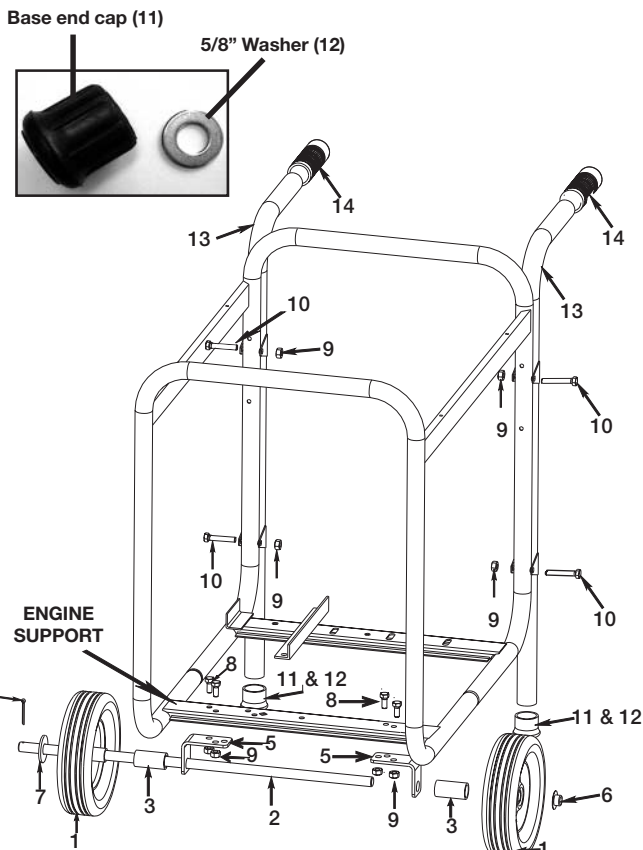


Figure 1

Items needed to install Portability Kit

- 2 - 1/2" wrenches
- 1 - 1/2" socket and socket wrench
- 1 - Wire pliers
- 1 - Hammer
- 1 - Adjustable Wrench
- 1 - 1" thick x 1' square piece of wood

NOTE: The photos do not represent specific models. They are for reference only.

ASSEMBLY (cont'd)

5. Tap the axle cap (6) on the end of the axle (2), **without the hole**, using a hammer. (See Figure 6)



Figure 6

6. Slide one wheel (1) onto the axle (2) with the extended hub pointed away from axle cap (6). (See Figure 7a)
7. Slide one axle spacer (3) down against the wheel (1).
8. Slide the axle (2) through the holes in the wheel brackets (5).

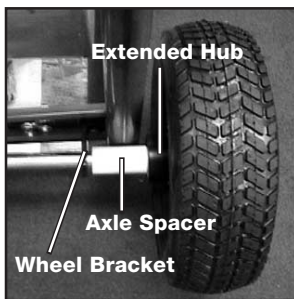


Figure 7a

9. Install the second axle spacer (3) then the second wheel (1) with the extended hub facing inward. See Figure 7b.

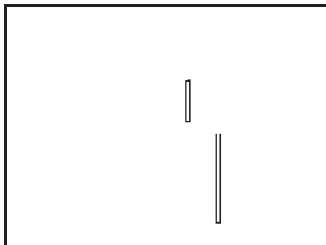


Figure 7b

10. Place the flat washer (7) against the wheel bushing and slide the cotter pin (4) through the drilled hole of the axle (2). Bend the cotter pin (4) to secure in place. See Figure 8.

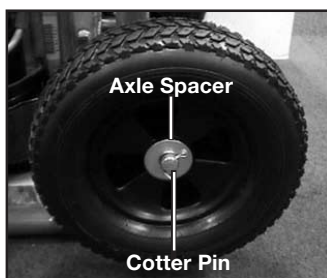


Figure 8

11. Tighten lock nuts (9) on wheel brackets.

12. Install the handle grips (14) on the handle assemblies (13) as shown in Figure 9.



Figure 9

13. Place one of the 5/8" washers (12) supplied into the bottom of each base end cap (13), then onto the end of each handle. See Figure 10. **NOTE:** This will prevent damage to the bottom of the caps during use.

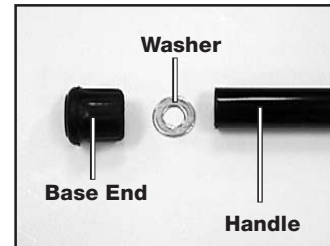


Figure 10

14. Line up the handle brackets with the holes in the frame near the receptacle end of the generator. See Figure 11.

15. Install hex screws (10) and lock nuts (9) as shown in Figure 11. Tighten with a 1/2" wrench.

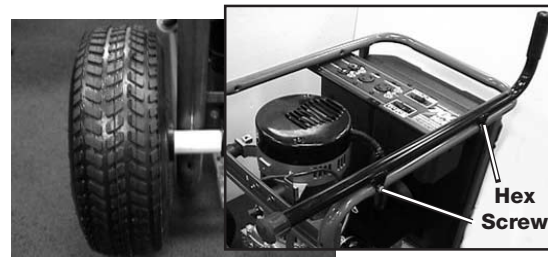


Figure 11

16. With another person helping, carefully tilt the generator to operating position.

17. The portability kit is now ready for use.