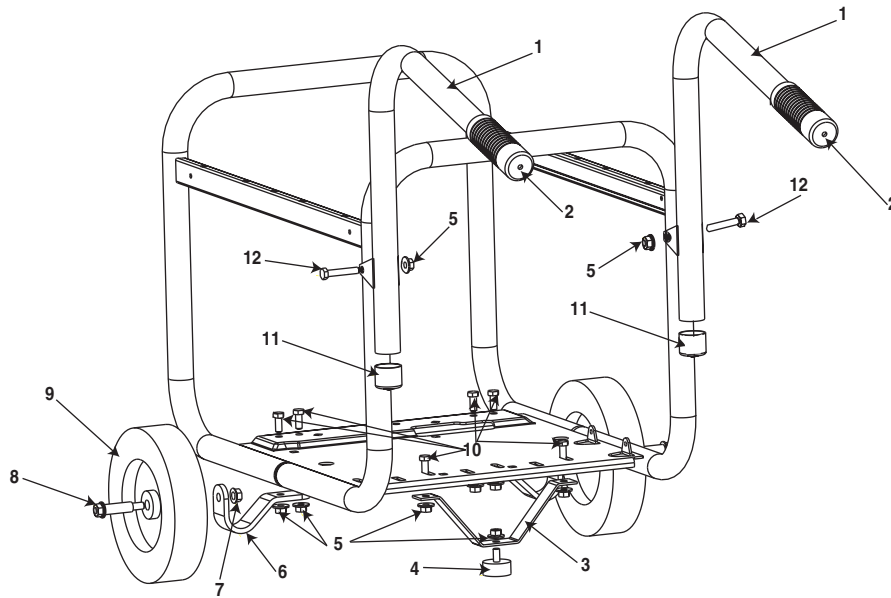


PORTABILITY KIT GAP62

The Wheel Kit was designed to improve the portability of your generator.



This portability kit includes the following parts:

Key

No.	Description	Part No
1	Handle (2 used)	GS-0765
2	Handle Grip (2 used)	GS-0220
3	Foot Bracket	GS-0562
4	Isolator Foot	GS-0587
5	Lock Nut (9 used)	SSF-8150
6	Wheel Bracket (2 used)	GS-0831
7	Lock Nut 3/8"-16 (2 used)	SSF-8111-ZN
8	Shoulder Bolt (2 used)	CAC-60
9	8" Semi-Pneumatic Wheels (2 used)	CAC-4293
10	Cap Screw 5/16-18 x 3/4" (6 used)	SS-12-CD
11	Handle Cap (2 used)	GS-0565
12	Bolt (2 used)	SSF-999-1

Tools Needed:

(2) - 1/2" wrenches

(2) - 9/16" wrenches.

- Place two 4"x4" pieces of wood on the floor. With another person helping, carefully lift the generator and place on top of the wood supports. This will support the weight of the gasoline engine and generator while the wheels, brackets, and handle are installed. Also, it will allow access to the underside of the generator for hardware installation. Make sure that the generator is supported evenly, level and will not fall.
- Place a handle caps (11) and handle grips onto ends of handles as shown prior to installation.

- The handle (1) should be installed on the electrical outlet end of the generator. Align the handle bracket with the pre-drilled hole in the generator frame. Place cap screw (12) through frame and handle bracket. Secure with lock nut (5) and tighten.
- Repeat the above step for the opposite side.
- Locate the engine support. Place one wheel bracket (6) on bottom of support as shown in illustration below. Align with the pre-drilled holes in support. Place 2 cap screws (10) through holes in bracket and support. Secure with 2 lock nuts (5) and tighten.
- Insert one shoulder bolt (8) into wheel (9). Insert threaded end of bolt through wheel bracket, secure with lock nut (7) and tighten. **Note:** The wheel will not rub frame if installed properly.
- Repeat the above steps for the opposite side.
- Insert the threaded stud of rubber foot (4) through the middle hole of the foot bracket (5). Secure with lock nut (5) and tighten.
- Locate the support under the electrical outlet end of the generator. Position foot bracket (3), with rubber foot installed, under the support and align the holes in the foot bracket (3) with the slots in the support. Place one cap screw (10) through each slot in the support and the holes in the foot bracket. Secure with the lock nuts (5) and tighten.
- Once completed, the wheel kit is ready for use.