

GA80 PORTABILITY KIT

✓ **Check kit before starting to make sure all parts are included.**

Tools Needed to Install Portability Kit

(2) - 1/2" Wrenches

(2) - 9/16" Wrenches

If holes are not pre-drilled, you will also need the following:

3/8" Drill Bit Drill

Center Punch

This portability kit includes the following parts:

Key

No.	Description
1	Wheel (2 used)
2	Shoulder Bolt (2 used)
3	Lock Nut 3/8"-16 (2 used)
4	Wheel Bracket (2 used)
5	Foot Bracket
6	Handle
7	Handle Cap (2 used)
8	Lock Nut 5/16"-18 (7 used)
9	Cap Screw 5/16"-18 x 3/4" (4 used)
10	Isolator Foot
11	Cap Screw 5/16-18 x 1.75" (2 used)
12	Washer (2 used)

Assembly

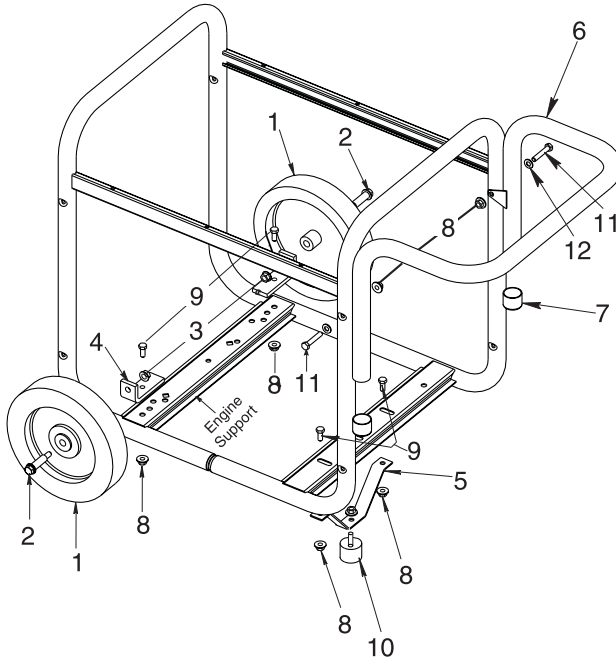
NOTE: The photos do not represent specific models. They are for reference only.

CAUTION Drain gas and oil before assembling the portability kit. Failure to do so will cause damage to the engine.

NOTE: Always follow state regulations for proper oil disposal.

1. Place generator on level ground; drain all gas and oil from the engine (see engine manual for correct procedure).
2. Place a 1" thick x 1' square piece of wood on the ground in front of the engine. With the help of another person, tilt the generator and rest the recoil starter on the wood. **NOTE:** This will support the gasoline engine during assembly and make assembly easier.

Illustration A



Handle Installation

Note: Place a handle cap (7) onto each end of the handle prior to installation.

Note: Older generators may not have the handle bracket holes pre-drilled in the frame. To drill these holes, place the handle onto the frame as shown in illustration A. Insure the top of the handle is flush with the top of the generator frame. Center punch the holes for the handle bracket, remove handle and drill punched holes with a 3/8" drill bit. Be sure to drill hole straight and completely through frame tube. Continue with step 1 for handle installation.

1. The handle should be installed on the electrical outlet end of the generator. Place one washer (12) on long cap screws (11). Align the handle brackets with the upper holes pre-drilled in the generator frame. Place mentioned screws through frame and handle brackets. Secure with lock nuts (8) and tighten.

Wheel Installation

1. Locate the engine support. (See illustration A) Place wheel bracket (4) onto support as shown. Secure with cap screw (9) and lock nut (8). Tighten securely.

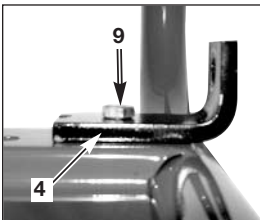
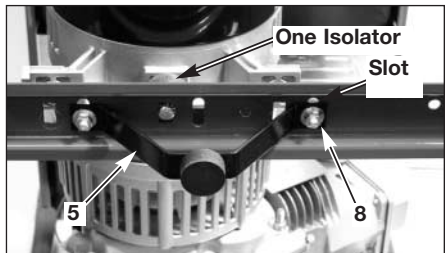


Illustration B

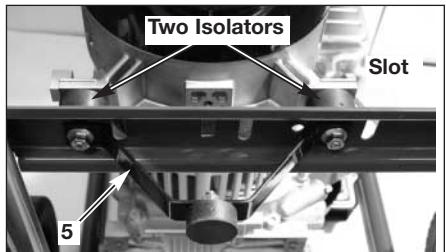
2. Insert one shoulder bolt (2) into wheel (1). Insert threaded end of bolt through wheel bracket, secure with lock nut (3) and tighten.
NOTE: The wheel will not rub frame if installed properly.
3. Repeat the above steps for the opposite side.

Foot Bracket Installation

1. Insert the threaded stud of rubber foot (10) through the middle hole of the foot bracket (5). Secure with lock nut (8) and tighten.
2. Locate the support under the electrical outlet end of the generator (See Illustration A).
 - a. **For units with one isolator,** position foot bracket (5), with rubber foot installed, under the support and align the holes in the foot bracket (5) with the slots in the support. Place one cap screw (9) through each slot in the support and the holes in the foot bracket. Secure with lock nuts (8) and tighten.



- b. **For units with two isolators,** Remove lock nuts securing isolator to support. Position foot bracket (5), with rubber foot installed, onto isolator post and secure with lock nuts. Tighten securely.



NOTE: Some units will not require all hardware supplied with kit.

3. Once completed, the wheel kit is ready for use.