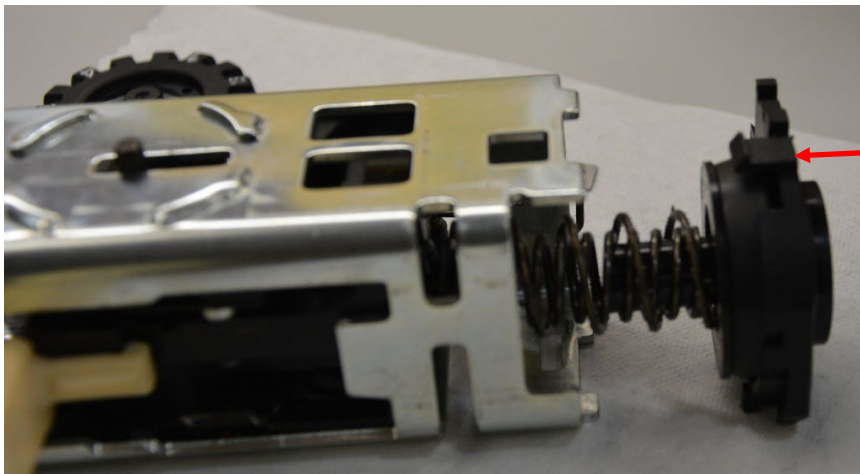


Troubleshooting Firing Issue

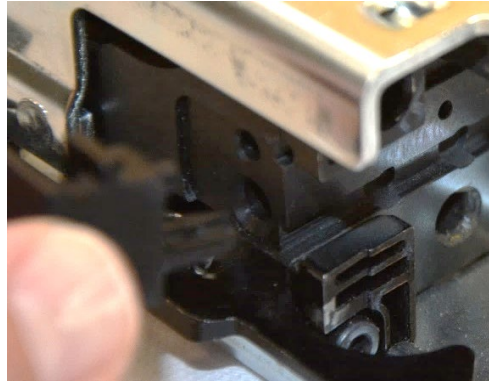
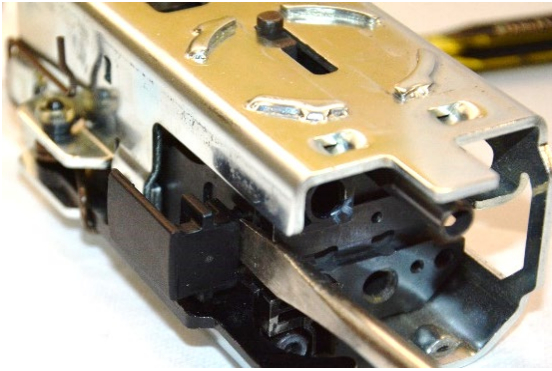
1. See Cleaning Repair Note document for instructions on the removal of the front end.
2. Remove the rear end cap from the tool and then the 4 screws that secure the top cover and remove.
3. Confirm that the trigger can be pulled.
4. The firing pin block can be removed at this point without splitting the main housing.



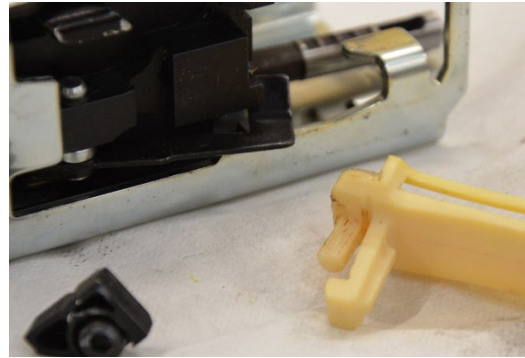
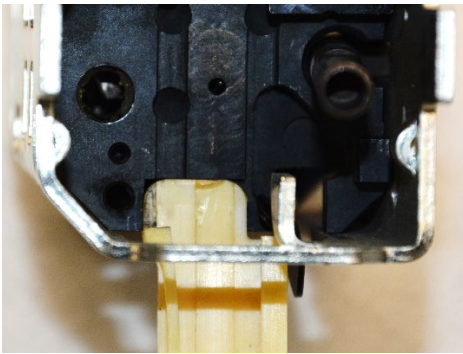
5. Disassemble the firing block assembly and check for any debris that might be hindering the motion of the mechanism. Press down on the tab to remove cap (Item 43).



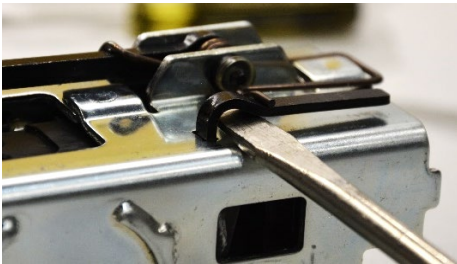
6. Remove cover (Item 30).



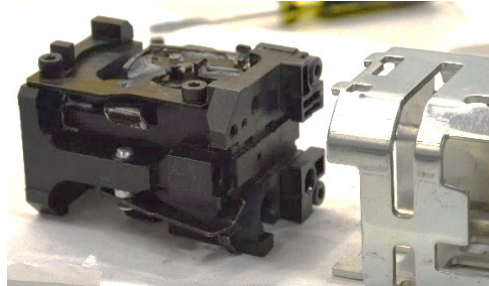
7. Remove strip guide block (Item 26) so guide (Item 38) can be removed.



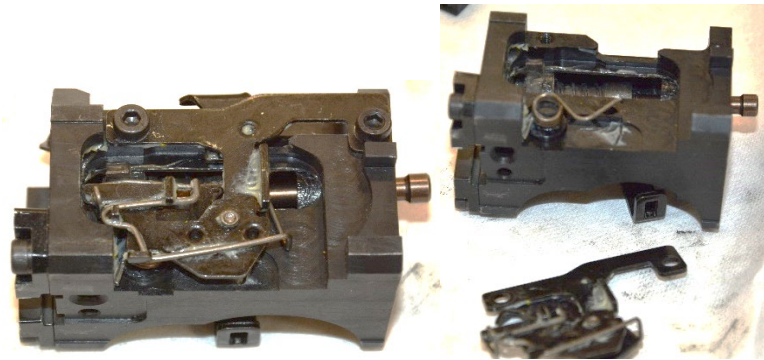
8. Lift up indexing lever (item 17) and remove.



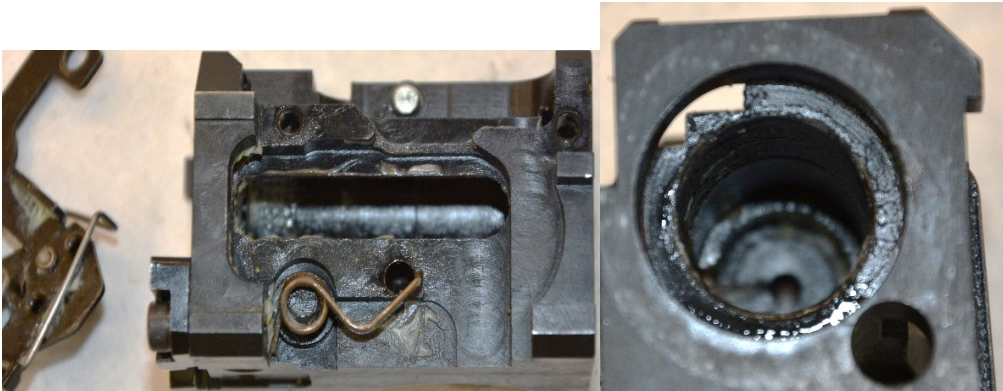
9. Now push out block assembly (Item 32).



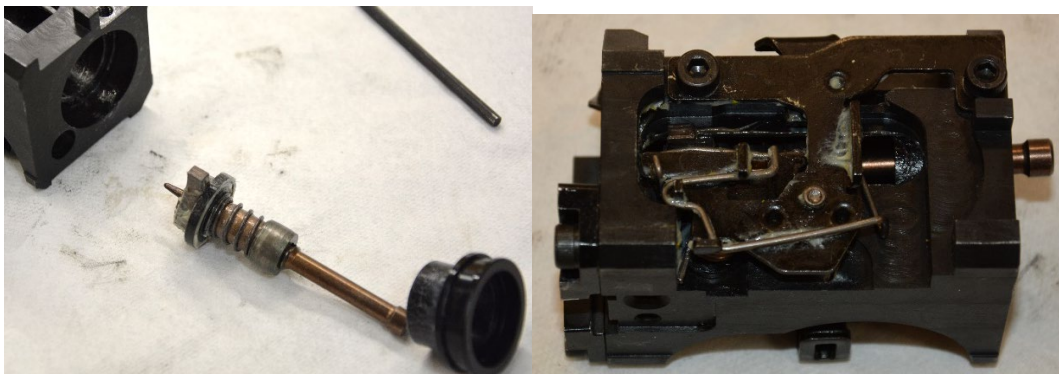
10. Wipe off any dust on all the components to check for any damage of the parts like the spring, stamped parts, firing pin, etc.



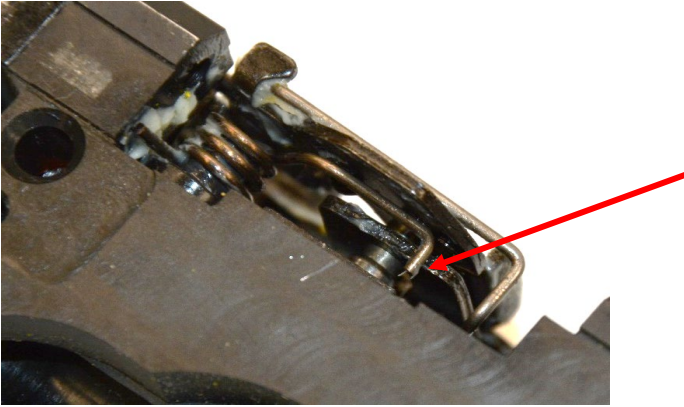
11. Clean up the firing block cavity.



12. Manually slide firing pin inside to check that it moves smoothly.



13. Reassemble the firing block **without adding any grease**. Note the position of the lower spring.



14. Make sure the firing pin assembly (Item 23) is fully seated or the block assembly will not slide back into the cage (Item 16).

15. Reassemble the tool and see if the issue has been resolved.

NOTE: The above cleaning steps are NOT to be performed by the user and would need to be done after 10,000 shots (no shot counter on this tool) or for complaints of low power.

Causes for pin not being fully seated:

- Wrong pin with the head style on the piston driver. Domed pins must be used with domed piston driver.
- Incorrect load
- Incorrect power adjustment setting

Misfires, jamming and piston return issues have been associated with old red load strips. They can be identified by a "PP" recycling mark in the center. The improved red load strips do not have a recycling mark.